

# PANELS

All Resin Ornamentation is Flexible, Stainable & Paintable.



PANELS

Pearlworks, Inc. 14251 Franklin Ave. Tustin, CA 92780  
Office: (714) 573-1700 Fax: (714) 573-1708 Toll Free: (855) PEARLWORKS  
[www.pearlworksinc.com](http://www.pearlworksinc.com)

# PANELS



# PANELS



**O**ur concept in building cabinets is offering our clients multi-design options that can easily be integrated without any trouble.

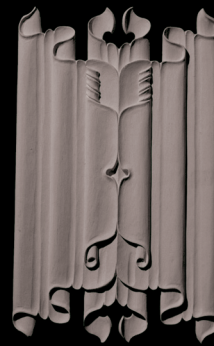
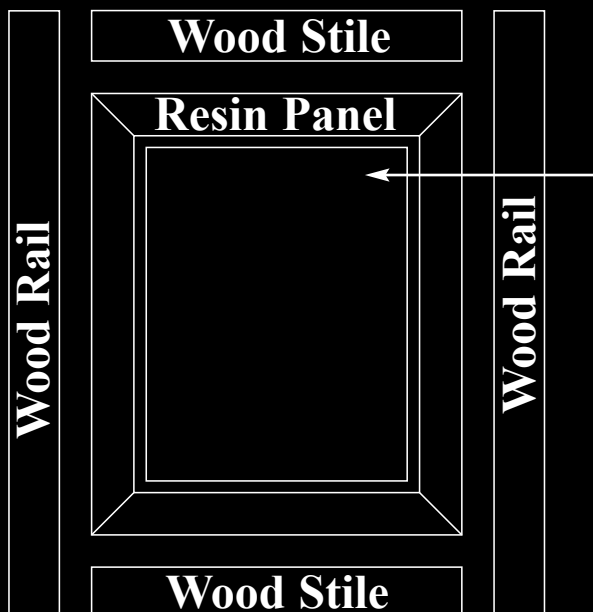
The modular system is just the answer.

The raised panel bodies are designed for standard stile & rail wood door frames. Once the raised panel body is assembled into the door frame, it can now be hung on the cabinet.

Now you can choose up to 4 different raised panel carved inserts. These inserts can simply be placed in the panel for a perfect fit.

All of our door panels will fit any of our modular carvings.

# Door Cross Section

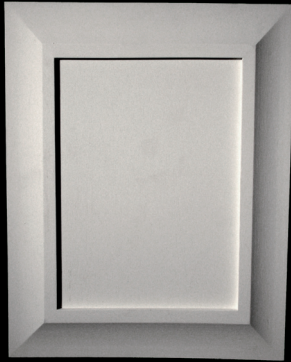


Once Door is hung on cabinet, carved detail can be placed to see which design looks best!

Our resin raised panels were designed to be fit into a wood stile + rail door. All doors can be assembled and hung on to the cabinet without the carved detail installed. Now your customer can fit the carved detail on the door to see which design looks best.

# PANELS

Our new modular panel system now offers more versatility with numerous applications. Please see the next several pages for recommendations. All series 1 and 2 frames are designed to accept our carved panels below.



**PANL-1 series**  
Panel Frame with cove detail



**PANL-2 series**  
Panel Frame with traditional detail

Part Number	Size
PANL-1-i	14-1/4" x 16-1/2" x 3/4"
PANL-2-i	14-1/4" x 16-1/2" x 3/4"
PANL-1-J	14-1/4" x 19-3/4" x 3/4"
PANL-2-J	14-1/4" x 19-3/4" x 3/4"
PANL-1-K	14-1/4" x 23-3/4" x 3/4"
PANL-2-K	14-1/4" x 23-3/4" x 3/4"
PANL-1-L	14-1/4" x 25-3/4" x 3/4"
PANL-2-L	14-1/4" x 25-1/2" x 3/4"
PANL-1-M	14-1/4" x 31-1/2" x 3/4"
PANL-2-M	14-1/4" x 31-3/4" x 3/4"

Choose the preferred carved panels listed below:

**Linen Fold**



\* PANL-100

**Victorian**



PANL-102

**Lion**



PANL-117

**Gothic**



PANL-150

Center Thickness: 1-3/4"

PANL-100-i  
8-1/2" x 11" x 1/2"

PANL-102-i  
9-1/4" x 11-3/4" x 1/2"

PANL-117-i  
9-1/4" x 11-3/4" x 1/2"

PANL-150-i  
9-1/4" x 11-3/4" x 1/2"

PANL-100-J  
8-1/2" x 14" x 1/2"

PANL-102-J  
9-1/4" x 14-3/4" x 1/2"

PANL-117-J  
9-1/4" x 14-3/4" x 1/2"

PANL-150-J  
9-1/4" x 14-3/4" x 1/2"

PANL-100-K  
8-1/2" x 18" x 1/2"

PANL-102-K  
9-1/4" x 18-3/4" x 1/2"

PANL-117-K  
9-1/4" x 18-3/4" x 1/2"

PANL-150-K  
9-1/4" x 18-3/4" x 1/2"

PANL-100-L  
8-1/2" x 20" x 1/2"

PANL-102-L  
9-1/4" x 20-3/4" x 1/2"

PANL-117-L  
9-1/4" x 20-3/4" x 1/2"

PANL-150-L  
9-1/4" x 20-3/4" x 1/2"

PANL-100-M  
8-1/2" x 26" x 1/2"

PANL-102-M  
9-1/4" x 26-3/4" x 1/2"

PANL-117-M  
9-1/4" x 26-3/4" x 1/2"

PANL-150-M  
9-1/4" x 26-3/4" x 1/2"

**Panel inserts sold separately, or as complete assemblies.**

\* All sizes are approx.- W" x H" x Thickness"

PANELS

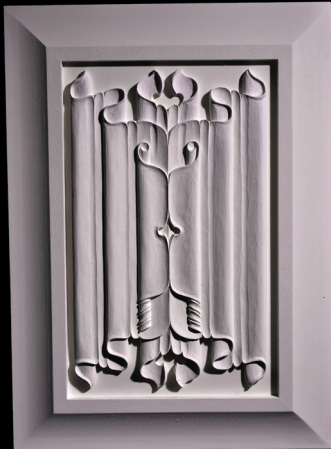
# PANELS

The panels below are sold as complete assemblies.

## Panel Profile

PANL-1 Frame with cove detail

### Linen Fold



**PANL-1-100 I**  
14-1/4" x 16-1/2" x 3/4"

**PANL-1-100 J**  
14-1/4" x 19-3/4" x 3/4"

**PANL-1-100 K**  
14-1/4" x 23-3/4" x 3/4"

**PANL-1-100 L**  
14-1/4" x 25-3/4" x 3/4"

**PANL-1-100 M**  
14-1/4" x 31-1/2" x 3/4"

### Victorian



**PANL-1-102 I**  
14-1/4" x 16-1/2" x 3/4"

**PANL-1-102 J**  
14-1/4" x 19-3/4" x 3/4"

**PANL-1-102 K**  
14-1/4" x 23-3/4" x 3/4"

**PANL-1-102 L**  
14-1/4" x 25-3/4" x 3/4"

**PANL-1-102 M**  
14-1/4" x 31-1/2" x 3/4"

### Lion



Center Thickness:  
1-3/4"

**PANL-1-117 I**  
14-1/4" x 16-1/2" x 3/4"

**PANL-1-117 J**  
14-1/4" x 19-3/4" x 3/4"

**PANL-1-117 K**  
14-1/4" x 23-3/4" x 3/4"

**PANL-1-117 L**  
14-1/4" x 25-3/4" x 3/4"

**PANL-1-117 M**  
14-1/4" x 31-1/2" x 3/4"

### Gothic



**PANL-1-150 I**  
14-1/4" x 16-1/2" x 3/4"

**PANL-1-150J**  
14-1/4" x 19-3/4" x 3/4"

**PANL-1-150 K**  
14-1/4" x 23-3/4" x 3/4"

**PANL-1-150 L**  
14-1/4" x 25-3/4" x 3/4"

**PANL-1-150 M**  
14-1/4" x 31-1/2" x 3/4"

# PANELS

The raised panel inserts are sold as a 2-Piece Assembly,  
all other parts featured below are sold separately



PANELS

\* All sizes are approx.- max W" x max H" x Thickness"

# PANELS

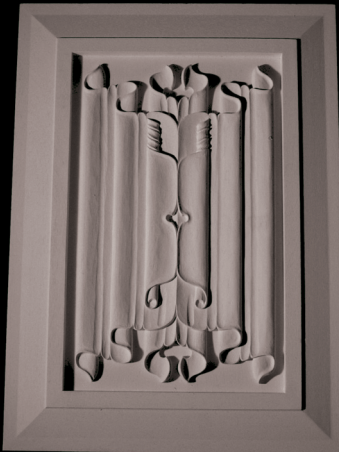
The panels below are sold as complete assemblies.



## Panel Profile

PANL-2 Frame with traditional detail

### Linen Fold



**PANL-2-100 I**  
14-1/4" x 16-1/2" x 3/4"

**PANL-2-100 J**  
14-1/4" x 19-3/4" x 3/4"

**PANL-2-100 K**  
14-1/4" x 23-3/4" x 3/4"

**PANL-2-100 L**  
14-1/4" x 25-1/2" x 3/4"

**PANL-2-100 M**  
14-1/4" x 31-3/4" x 3/4"

### Victorian



**PANL-2-102 I**  
14-1/4" x 16-1/2" x 3/4"

**PANL-2-102 J**  
14-1/4" x 19-3/4" x 3/4"

**PANL-2-102 K**  
14-1/4" x 23-3/4" x 3/4"

**PANL-2-102 L**  
14-1/4" x 25-1/2" x 3/4"

**PANL-2-102 M**  
14-1/4" x 31-3/4" x 3/4"

### Lion



Center Thickness:  
1-3/4"

**PANL-2-117 I**  
14-1/4" x 16-1/2" x 3/4"

**PANL-2-117 J**  
14-1/4" x 19-3/4" x 3/4"

**PANL-2-117 K**  
14-1/4" x 23-3/4" x 3/4"

**PANL-2-117 L**  
14-1/4" x 25-1/2" x 3/4"

**PANL-2-117 M**  
14-1/4" x 31-3/4" x 3/4"

### Gothic



**PANL-2-150 I**  
14-1/4" x 16-1/2" x 3/4"

**PANL-2-150 J**  
14-1/4" x 19-3/4" x 3/4"

**PANL-2-150 K**  
14-1/4" x 23-3/4" x 3/4"

**PANL-2-150 L**  
14-1/4" x 25-1/2" x 3/4"

**PANL-2-150 M**  
14-1/4" x 31-3/4" x 3/4"

# PANELS

The raised panel inserts are sold as a 2-Piece Assembly,  
all other parts featured below are sold separately

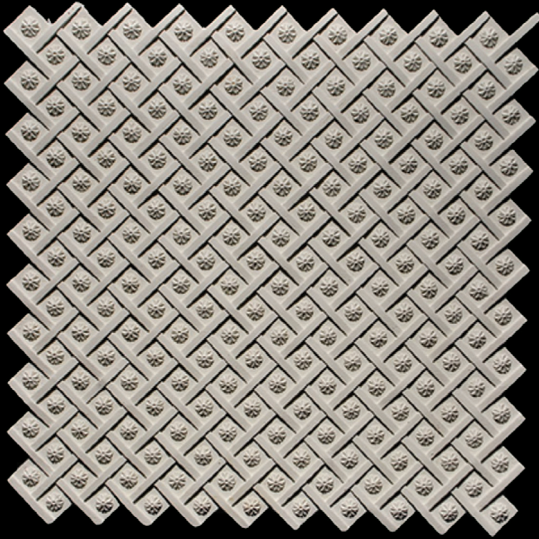


# PANELS

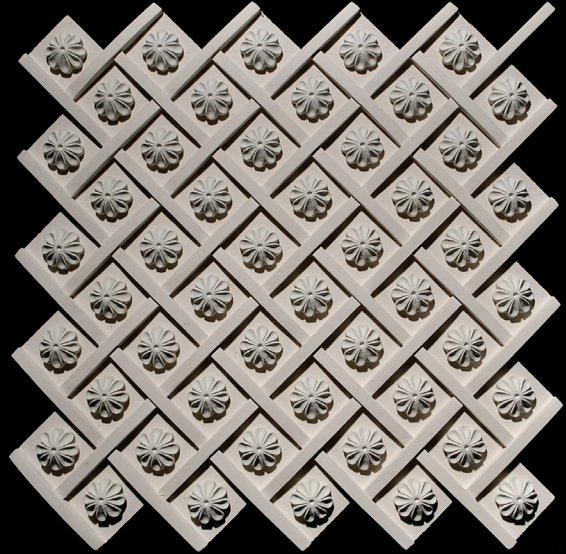


# PANELS

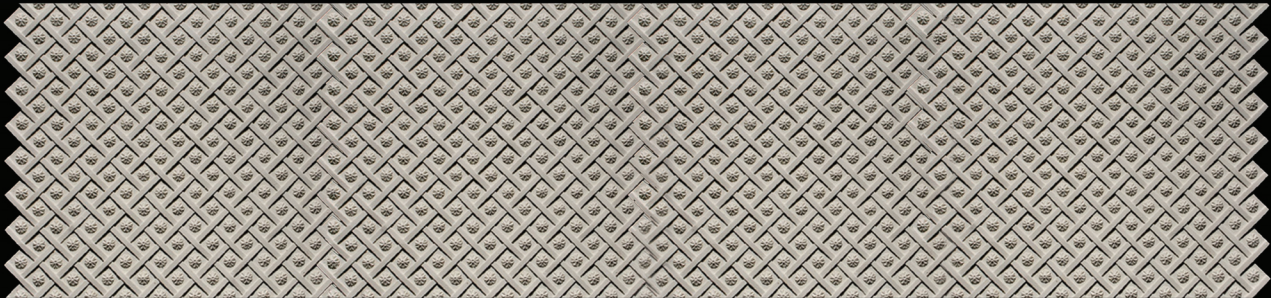
PANL-104A & PANL-104B is an interlocking pattern designed for coverage of large areas with minimal waste.



**PANL-104A** (inside dim. 3/4" sq.)  
13-3/4" x 13-3/4" x 3/8"

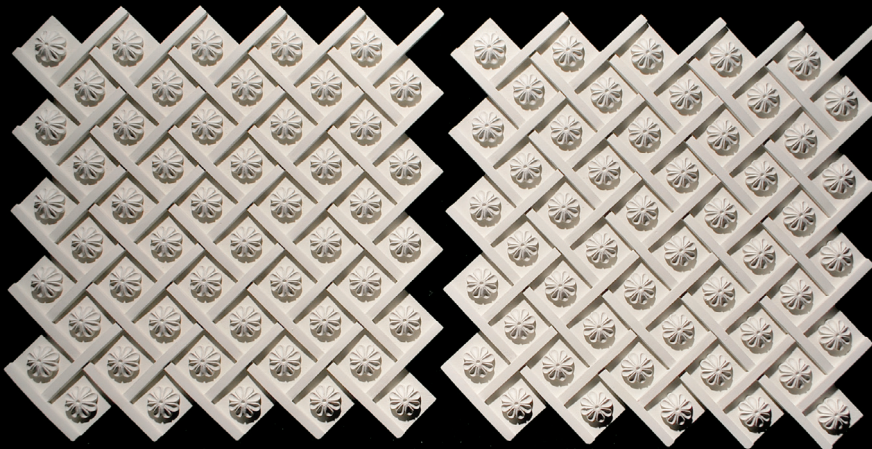


**PANL-104B** (inside dim. 1-3/4" sq.)  
16-1/4" x 16-1/4" x 3/4"



**PANL-104A-EXT** (inside dim. 3/4" sq.)  
52-3/4" x 10" x 1/2"

(Only interlocking on left and right edge.)



**Showing interlocking system.**

\* All sizes are approx.- W" x H" x Thickness"

# PANELS



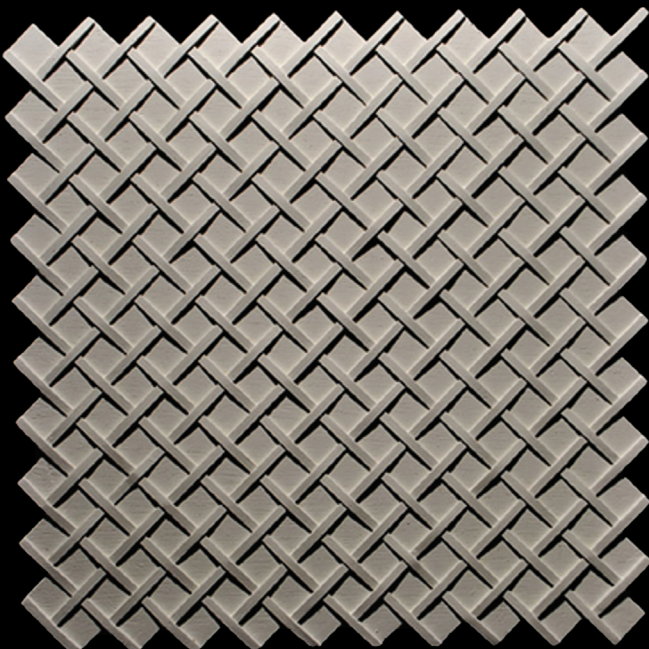
**PANL-103A**

8" x 17-1/4" x 1"

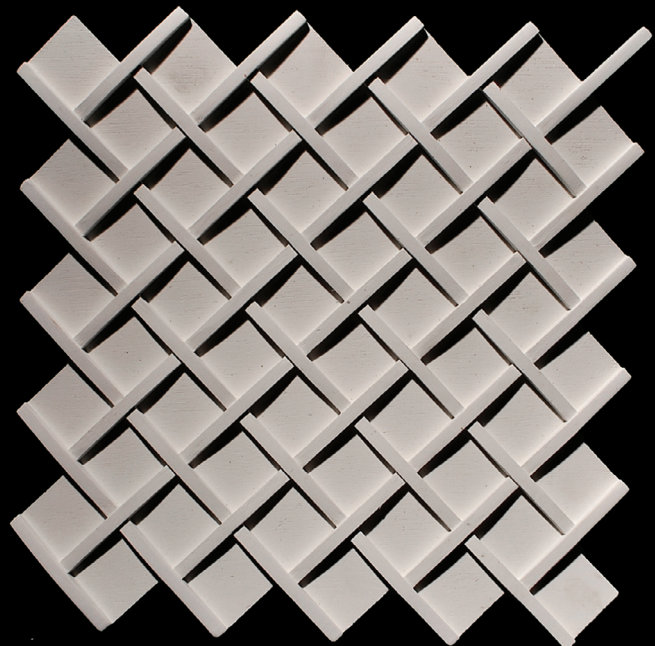
**PANL-103B**

12-3/4" x 22-3/4" x 1-1/4"

PANL-106A and PANL-106B is an interlocking pattern designed for coverage of large areas with minimal waste.

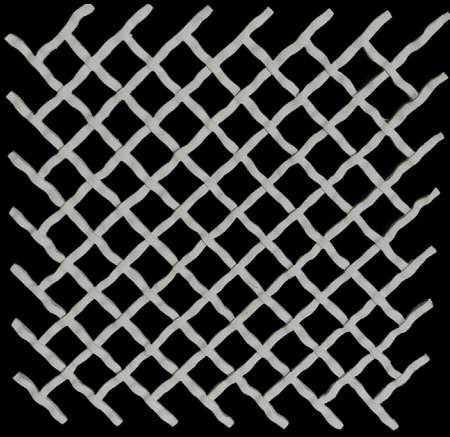


**PANL-106A** (inside dim. 3/4" sq.)  
13-1/2" x 13-1/2" x 3/8"

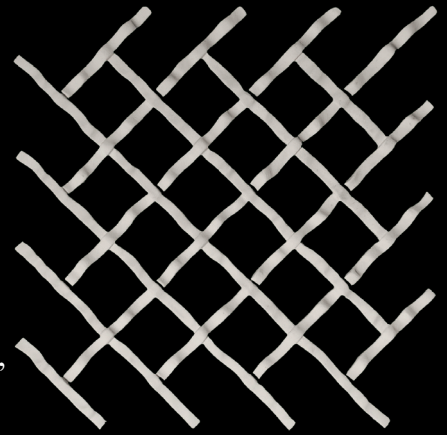


**PANL-106B** (inside dim. 1- 3/4" sq.)  
16-1/4" x 16-1/4" x 1/2"

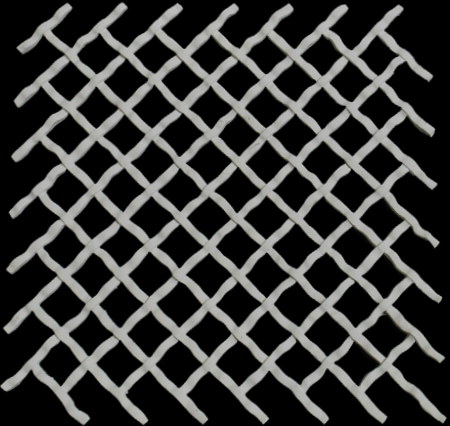
# PANELS



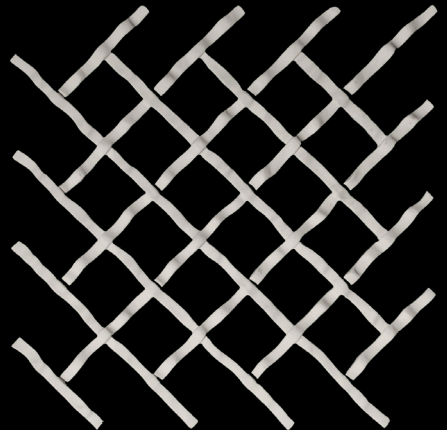
**PANL-105A**  
(inside dim. 1" sq.)  
13-1/2" x 13-1/2" x 1/4"



**PANL-105B**  
(inside dim. 1-5/8" sq.)  
13-1/2" x 13-1/2" x 3/8"

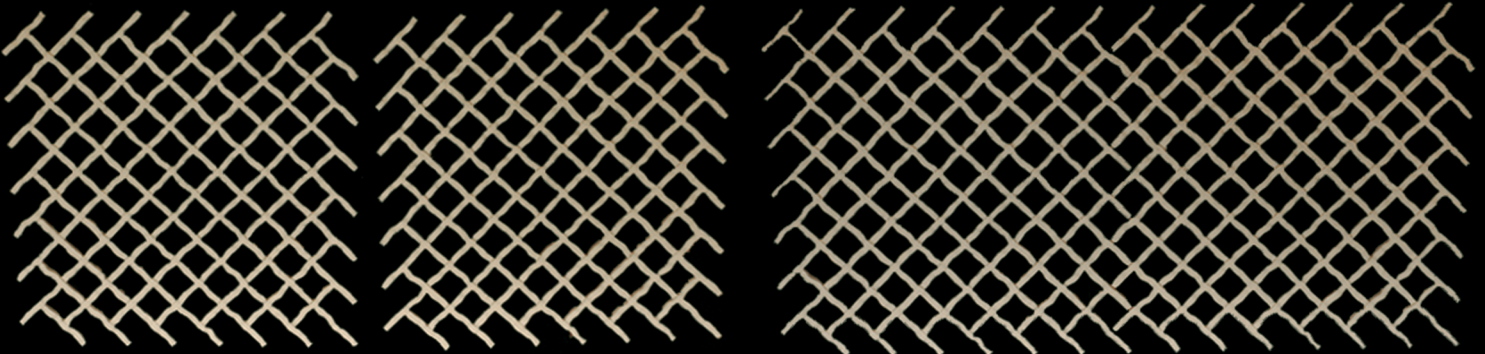


**PANL-105A-EXT**  
(inside dim. 1" sq.)  
27" x 27" x 1/4"



**PANL-105B-EXT**  
(inside dim. 1-5/8" sq.)  
27" x 27" x 3/8"

**PANL-105A & B** is an interlocking pattern designed for coverage of large areas with minimal waste.

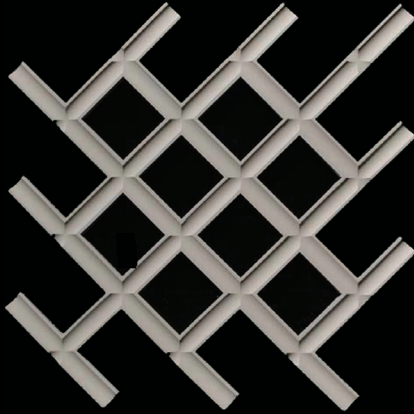


**Our New French PANL-105A & PANL-105B**  
is a classic detail for Ceiling and Wall designs  
that need a refined look!

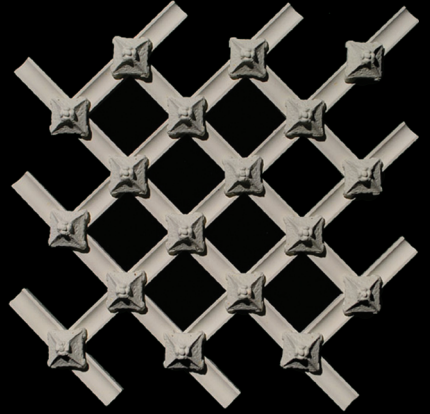
\* All sizes are approx.- W" x H" x Thickness"

# PANELS

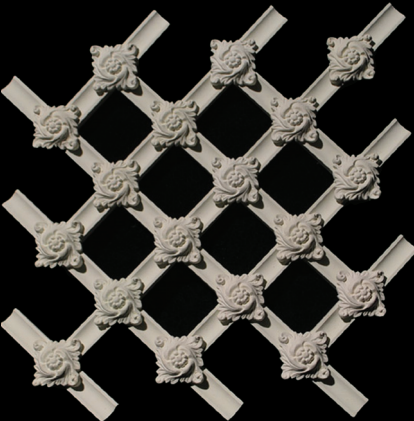
All Modular Panels can be Interlocked for coverage of large areas with minimal waste.



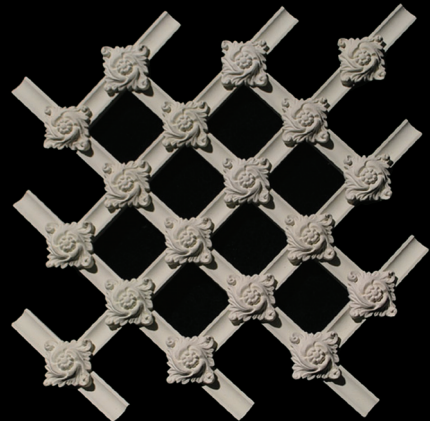
**PANL-114A**  
13-1/2" x 13-1/2" x 1/2"



**PANL-114C**  
13-1/2" x 13-1/2" x 1-1/8"



**PANL-114B**  
13-1/2" x 13-1/2" x 1-1/8"

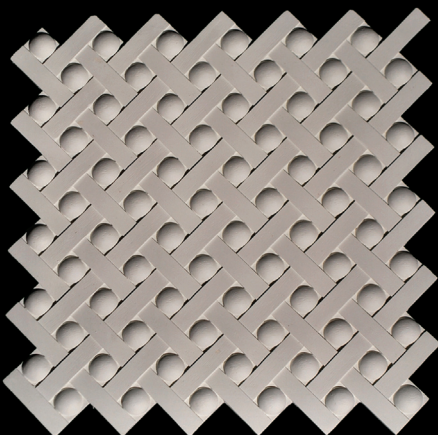


**PANL-114B-EXT**  
25" x 25" x 1-1/8"

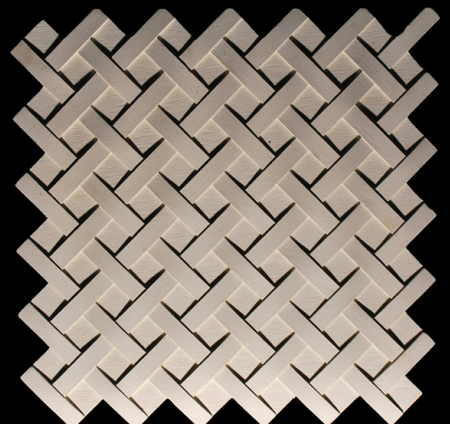


**PANL-114B**

All of our modular panels easily interlock for coverage of large areas. No seams and low waste factors, another plus.

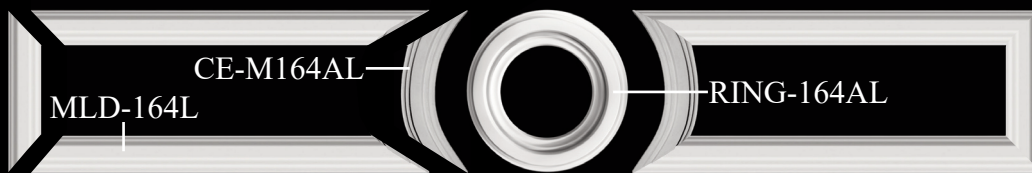


**PANL-119**  
14-3/4" x 14-3/4" x 5/16"

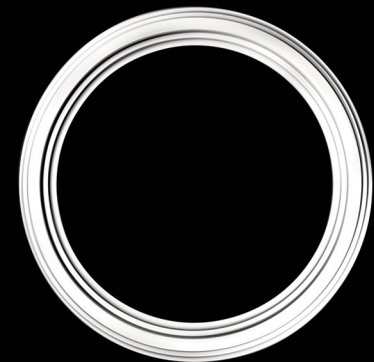


**PANL-120**  
14-3/4" x 14-3/4" x 5/16"

# PANELS



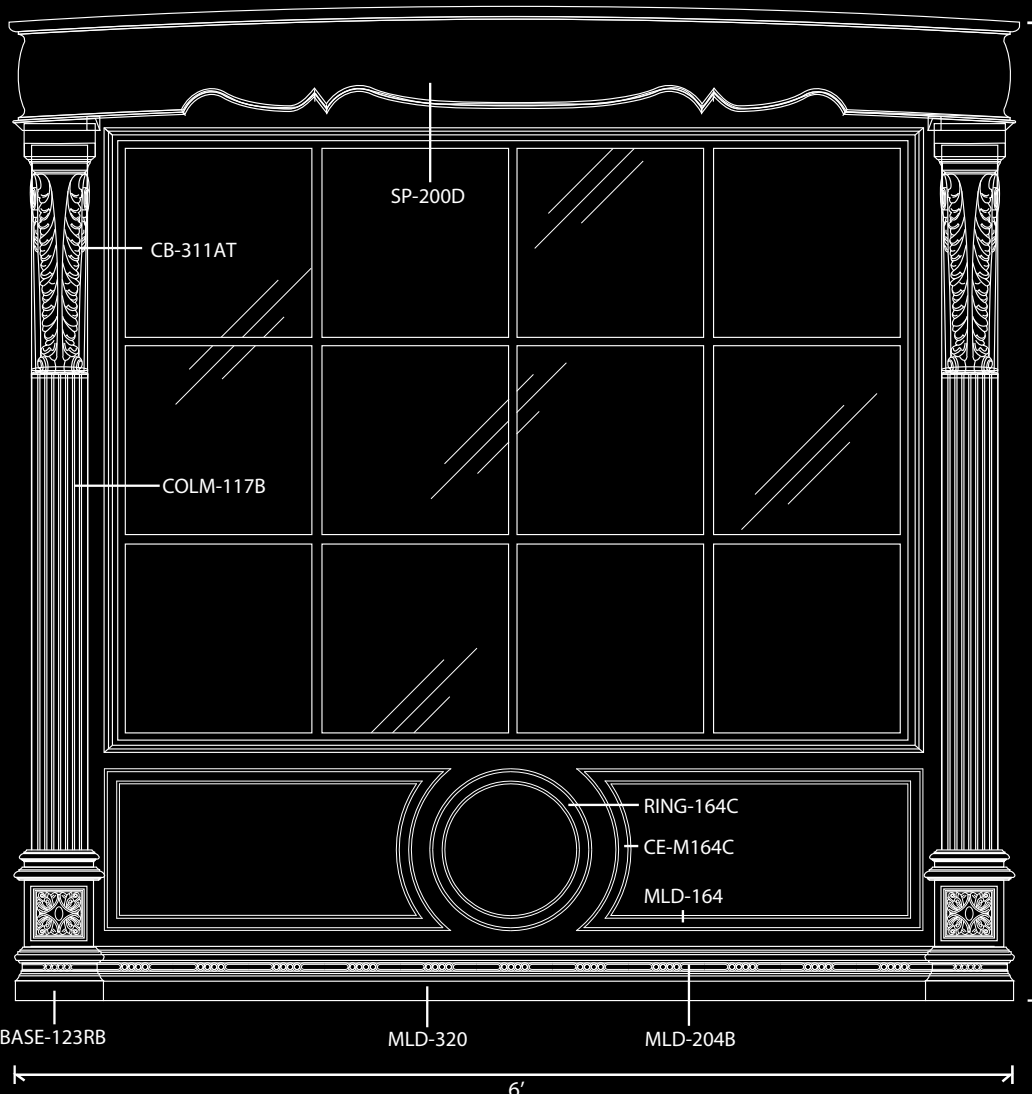
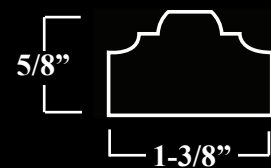
**RING-164AL**  
6-1/2" O.D  
3-3/4" I.D  
5/8" thick



**RING-164BL**  
13" O.D  
10" I.D  
5/8" thick

**RING-164CL**  
15" O.D  
12-1/4" I.D  
5/8" thick

MLD-164L Profile



**PANELS**

\* All sizes are approx. - W" x H" x Thickness"

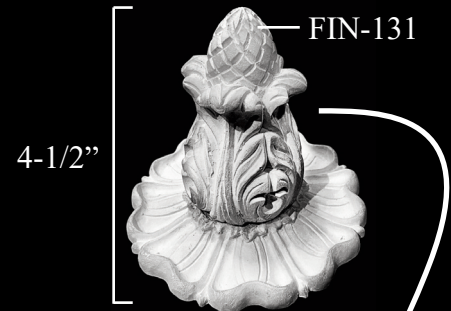
# PANELS



**PANL-116B-1**  
11-1/2" x 11-1/2" x 1"



# PANELS



**PANL-116B-1**  
Price Includes Center Rosette  
11-1/2" x 11-1/2" x 1"



**PANL-116B-2**  
Price Includes Center Rosette  
11-1/2" x 11-1/2" x 2"



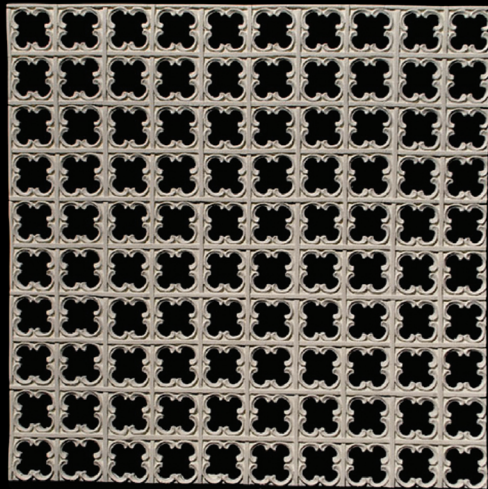
**PANL-116B-3**  
Price Includes Center Finial  
11-1/2" x 11-1/2" x 5"

\* All sizes are approx. - W" x H" x Thickness"

# PANELS



**PANL-140**  
4" x 4" x 1/2"



**PANL-130A**  
14" x 14" x 3/16"  
Edges interlock for a seamless design with coverage of large areas with minimal waste.



**PANL-121C**  
17-1/2" x 36" x 1-1/2"

**PANL-121D**  
23-1/2" x 36" x 1-1/2"



**PANL-160A**  
3-1/4" x 13" x 3/4"

**PANL-160B**  
3-1/4" x 18" x 3/4"

# PANELS



## Complete Front Panel Assemblies Shown



PANL-129



PANL-132



PANL-133



PANL-134



PANL-129 29-1/4" x 2-3/4" x 1/2"



PANL-132 28-7/8" x 2-3/4" x 1/2"



PANL-133 16-1/2" x 2-1/4" x 1/4"



PANL-134 30" x 2-1/4" x 1/4"

Sold as a 4 piece set. Can be adjusted Wider.



PANL-131 28-7/8" x 2-3/4" x 1-5/8"

- \* Wood drawer front not included in price.
- \* Call for pricing on wood drawer fronts.

PANELS

# PANELS

All Ornamentation is Flexible, Stainable & Paintable.



Radius drawer fronts made easy.



### NEW SHIELDS AND PANELS

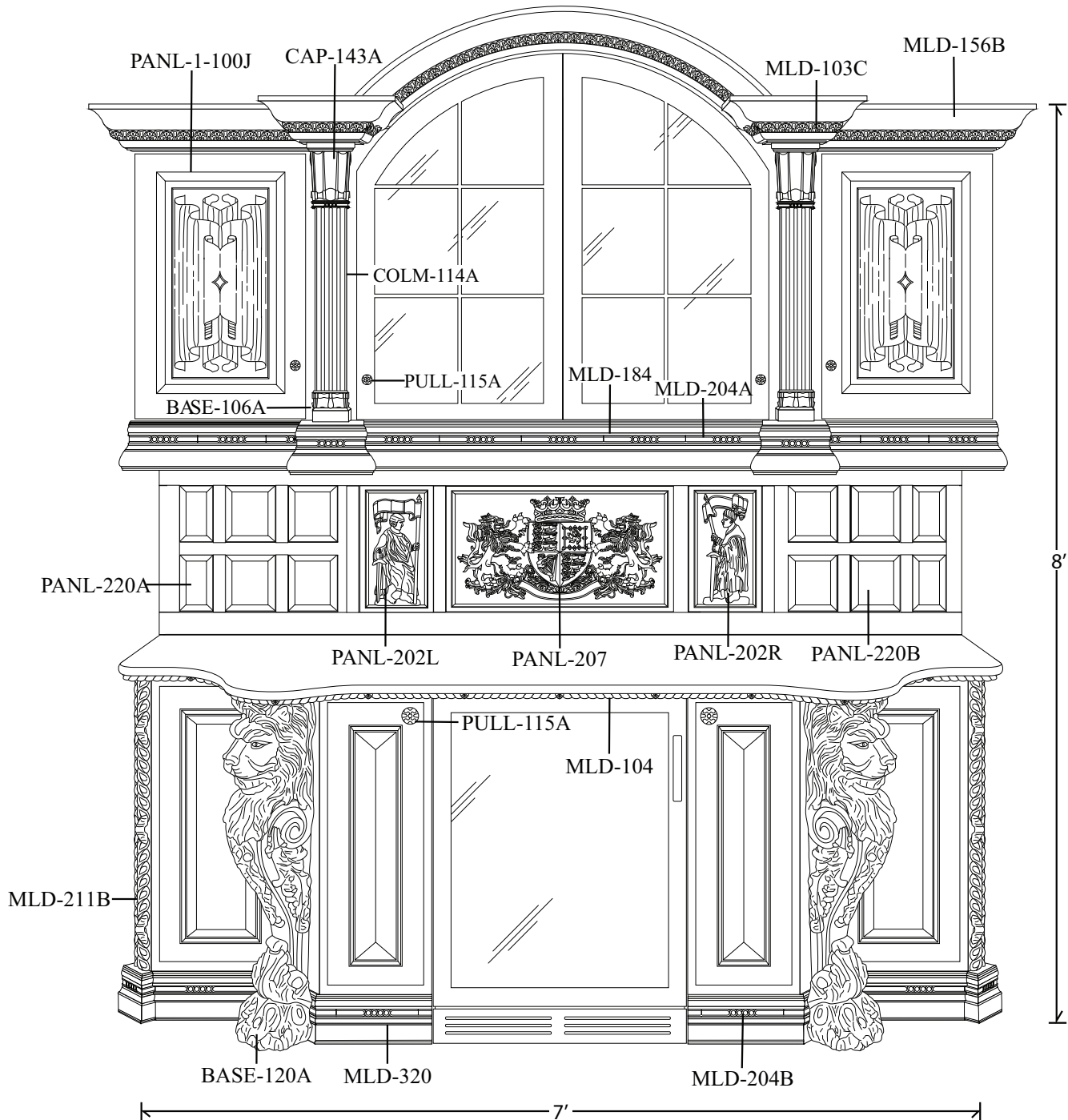
These exquisitely designed panels are made to be used as centering elements for applications ranging from kitchen backsplashes to cabinetry and door installations. Panels can be used in conjunction with wood, tile, or stone to create a dramatic focal point.

# PANELS



# PANELS

## Serving Cabinet Combo



PANELS

\*Pearlworks Design Services created this cabinet.

The total cost for *Pearlworks* parts as shown is approximately **\$3,700**.

# PANELS



# PANELS

Panels shown are also available in 4 MF (metal finishes)  
**COOPER, OIL RUB BRONZE, POLISHED BRASS & PEWTER**  
 See Intro Beauty Pages 12-13 to see the Metal Finish in Color



**PANL-200**  
 8" x 14" x 1"  
**PANL-200-MF** Call For Quote  
 (Metal Finish)



**PANL-202L**  
 8" x 14" x 1"  
**PANL-202L-MF** Call For Quote  
 (Metal Finish)



**PANL-202R**  
 8" x 14" x 1"  
**PANL-202R-MF** Call For Quote  
 (Metal Finish)



**PANL-203**  
 8" x 14" x 1"  
**PANL-203-MF** Call For Quote  
 (Metal Finish)



**PANL-204**  
 8" x 14" x 1"  
**PANL-204-MF** Call For Quote  
 (Metal Finish)

Available in:  
 Copper  
 Bronze  
 Brass  
 Pewter

See Intro Beauty  
 Pages of catalog to  
 see Metal Finishes  
 in Color.

PANELS

\* All sizes are approx.- W" x H" x Thickness"

# PANELS



**PANL-201**  
23-3/4" x 14" x 1"

**PANL-201-MF** Call For Quote  
(Metal Finish)



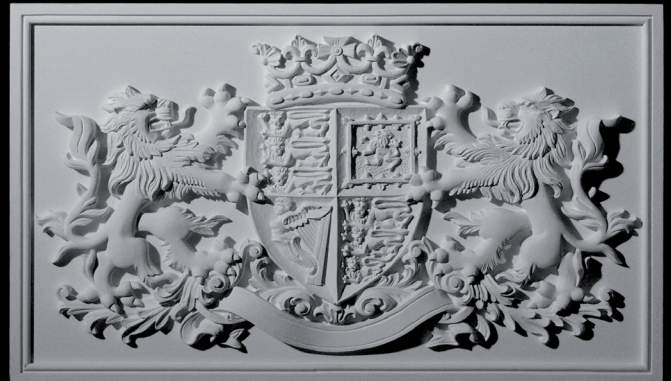
**PANL-205**  
23-3/4" x 14" x 1"

**PANL-205-MF** Call For Quote  
(Metal Finish)



**PANL-206**  
23-3/4" x 14" x 1"

**PANL-206-MF** Call For Quote  
(Metal Finish)



**PANL-207A**  
23-3/4" x 14" x 1"

**PANL-207B**  
33" x 20-3/4" x 1-1/2"

**PANL-207-AMF** Call For Quote  
(Metal Finish)



**PANL-220B**

**PANL-200**

**PANL-201**

\* All sizes are approx.- W" x H" x Thickness"

# PANELS

Panels shown are also available in 4 MF (metal finishes)  
**COOPER, OIL RUB BRONZE, POLISHED BRASS & PEWTER**



## 4-1/2" Height

**PANL-210A**  
 12-3/4" x 4-1/2" x 3/4"

**PANL-210A-MF**  
 Call For Quote  
 (Metal Finish)

**PANL-210B**  
 18-3/4" x 4-1/2" x 3/4"

**PANL-210B-MF**  
 Call For Quote  
 (Metal Finish)

## 6" Height

**PANL-212A**  
 12-3/4" x 6" x 3/4"

**PANL-212A-MF**  
 Call For Quote  
 (Metal Finish)

**PANL-212B**  
 19" x 6" x 3/4"

**PANL-212-B-MF**  
 Call For Quote  
 (Metal Finish)

**PANL-212C**  
 24-1/4" x 6" x 3/4"

**PANL-212C-MF**  
 Call For Quote  
 (Metal Finish)

**PANL-212D**  
 30-1/4" x 6" x 3/4"

**PANL-212D-MF**  
 Call For Quote  
 (Metal Finish)

## 7" Height

**PANL-214C**  
 24-1/2" x 7" x 1-1/4"

**PANL-214D**  
 30-3/4" x 7" x 1-1/4"

PANELS



**PANL-207**  
 installed in a  
 wall panel  
 design.

\* All sizes are approx.- W" x H" x Thickness"

# PANELS



PANL-210, PANL-212, PANL-211, PANL-213 AND PANL-221 are designed to go with fluted friezes as shown in the picture above.

\* All sizes are approx.- W" x H" x Thickness"

# PANELS

Panels shown are also available in 4 MF (metal finishes)  
**COPPER, OIL RUB BRONZE, POLISHED BRASS & PEWTER**



## 3-1/2" Height

**PANL-209**  
 12-3/4" x 3-1/2" x 3/4"

**PANL-209-MF**  
 Call For Quote  
 (Metal Finish)

## 4-1/2" Height

**PANL-211A**  
 12-3/4" x 4-1/2" x 3/4"

**PANL-211A-MF**  
 Call For Quote  
 (Metal Finish)

**PANL-211B**  
 18-3/4" x 4-1/2" x 3/4"

**PANL-211B-MF**  
 Call For Quote  
 (Metal Finish)

## 6" Height

**PANL-213A**  
 12-3/4" x 6" x 3/4"

**PANL-213A-MF**  
 Call For Quote  
 (Metal Finish)

**PANL-213B**  
 19" x 6" x 3/4"

**PANL-213B-MF**  
 Call For Quote  
 (Metal Finish)

**PANL-213C**  
 24-1/4" x 6" x 3/4"

**PANL-213C-MF**  
 Call For Quote  
 (Metal Finish)

**PANL-213D**  
 30-1/4" x 6" x 3/4"

**PANL-213D-MF**  
 Call For Quote  
 (Metal Finish)

## 7" Height

**PANL-215C**  
 24-1/4" x 7" x 1-1/4"

**PANL-215D**  
 30-3/4" x 7" x 1-1/4"

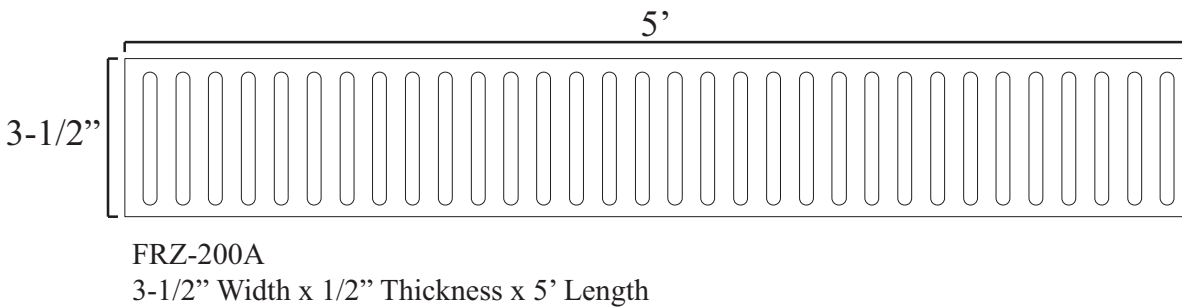
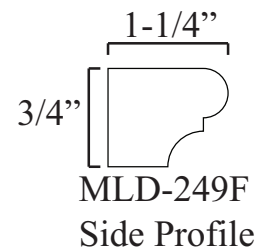
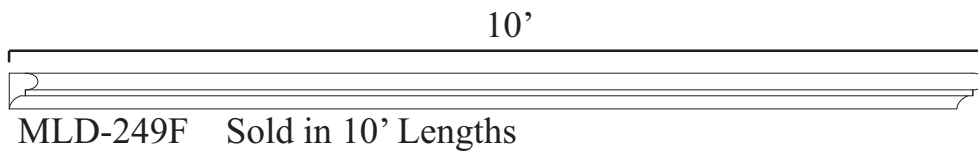
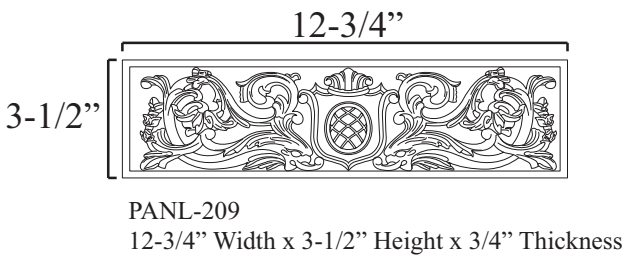
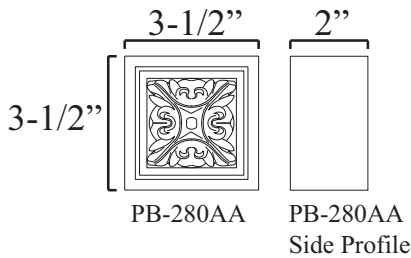


PANELS

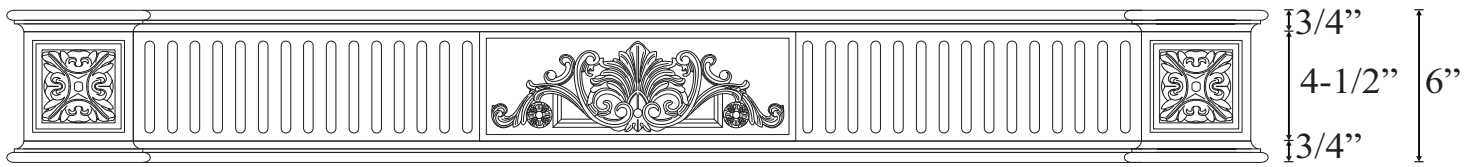
# 3-1/2" Frieze Stretcher Assembly



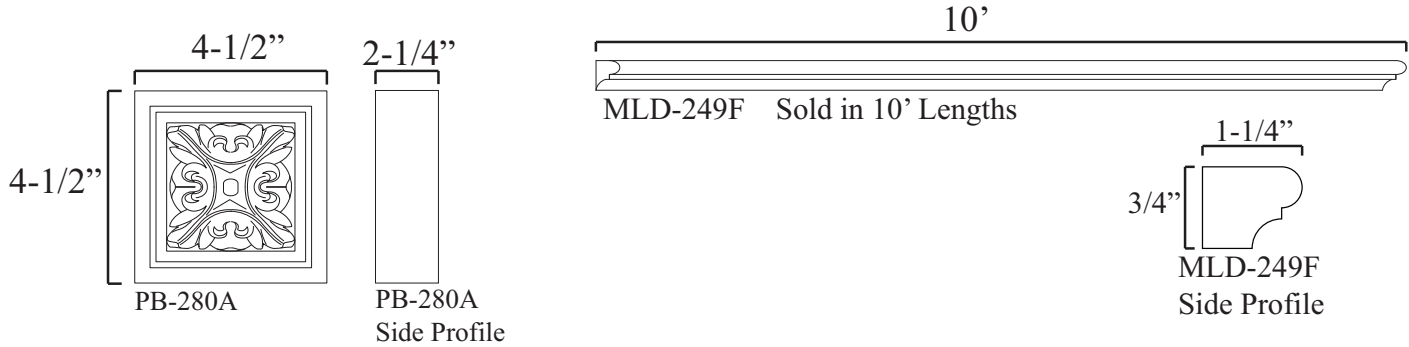
Moulding (MLD-249F) wraps around plinth block.



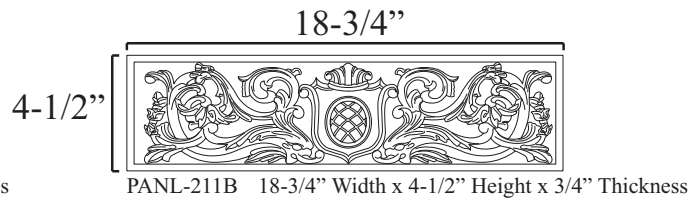
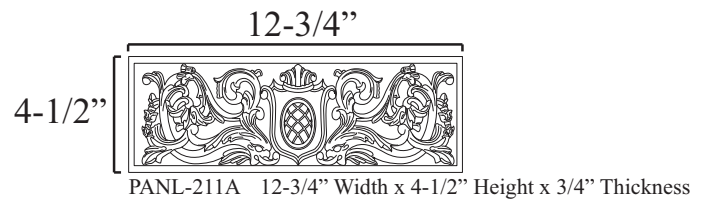
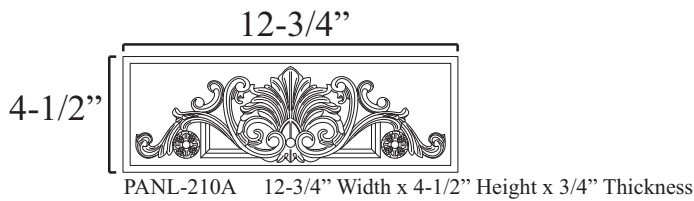
# 4-1/2" Frieze Stretcher Assembly



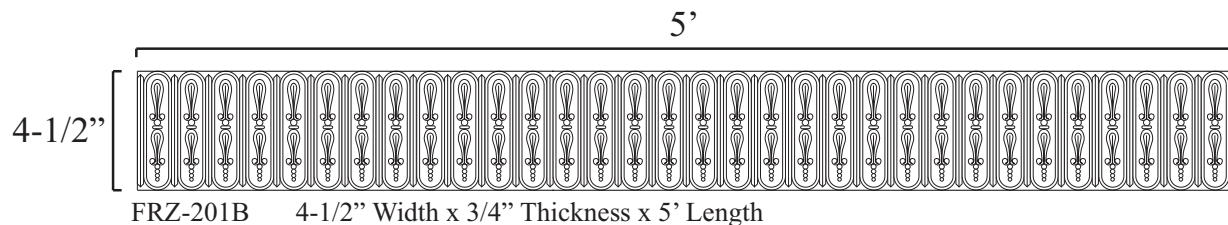
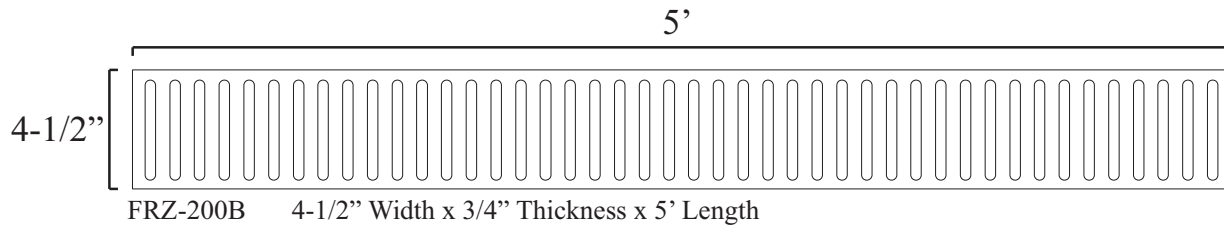
Moulding (MLD-249F) wraps around plinth block.



## OPTIONAL CENTER PANELS



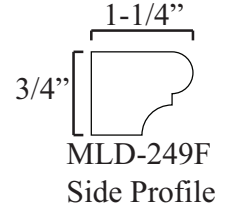
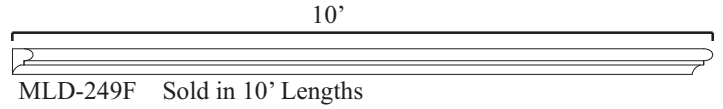
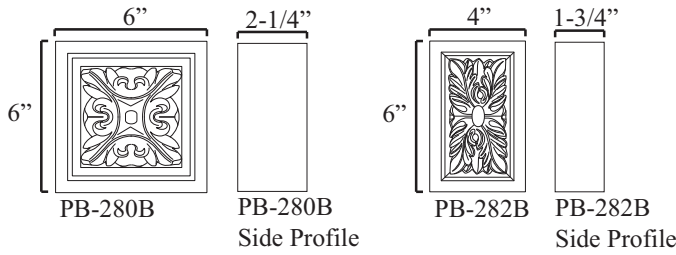
## OPTIONAL FRIEZE PANELS



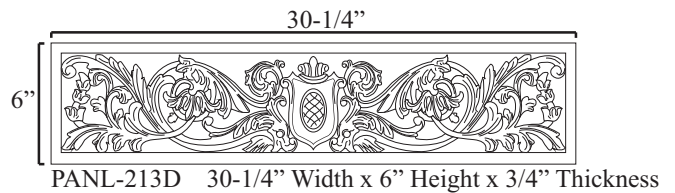
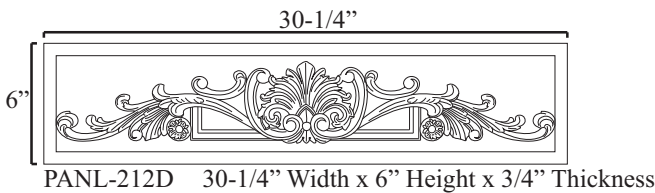
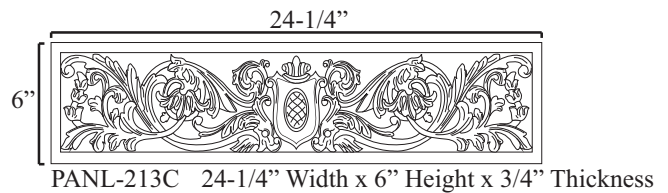
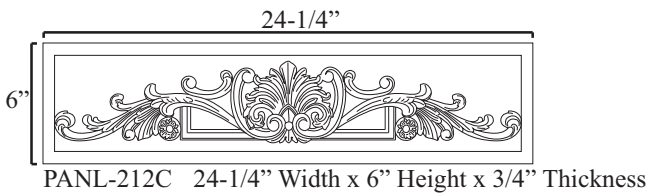
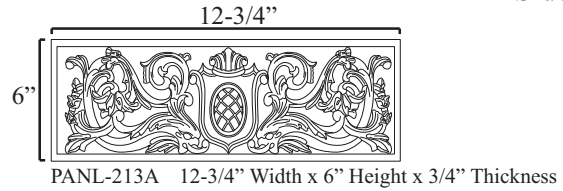
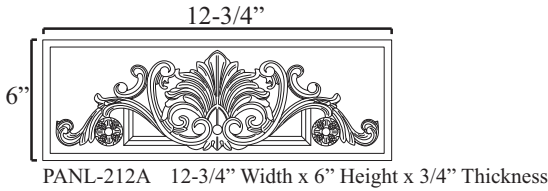
# 6" Frieze Stretcher Assembly



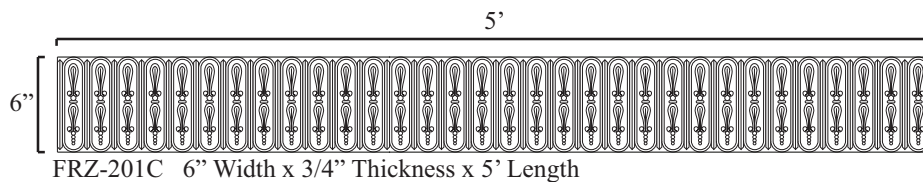
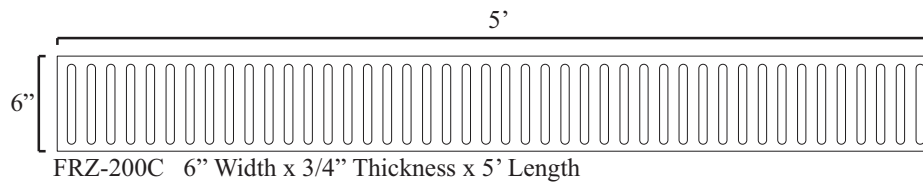
Moulding (MLD-249F) wraps around plinth block.



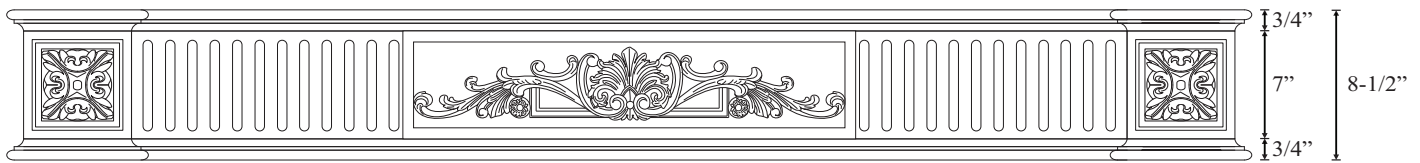
## OPTIONAL CENTER PANELS



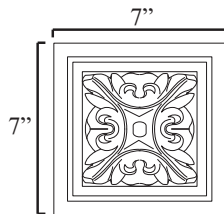
## OPTIONAL FRIEZE PANELS



# 7" Frieze Stretcher Assembly



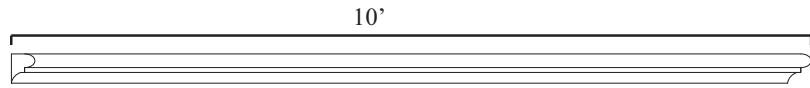
Moulding (MLD-249F) wraps around plinth block.



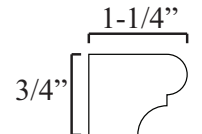
PB-280C



PB-280C  
Side Profile

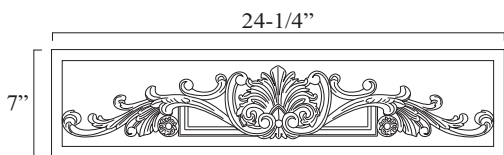


MLD-249F  
3/4" Width x 1-1/4" Thickness x 10' Length



MLD-249F  
Side Profile

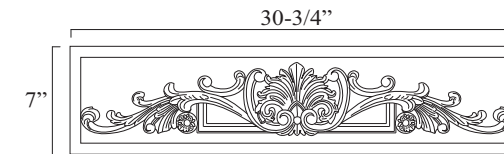
## OPTIONAL CENTER PANELS



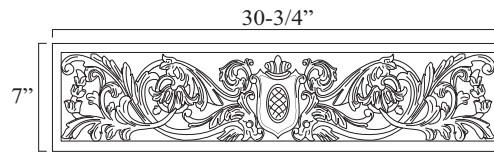
PANL-214C  
24-1/2" Width x 7" Height x 1-1/4" Thickness



PANL-215C  
24-1/4" Width x 7" Height x 1-1/4" Thickness

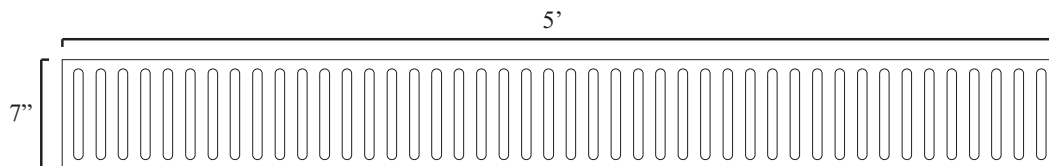


PANL-214D  
30-3/4" Width x 7" Height x 1-1/4" Thickness

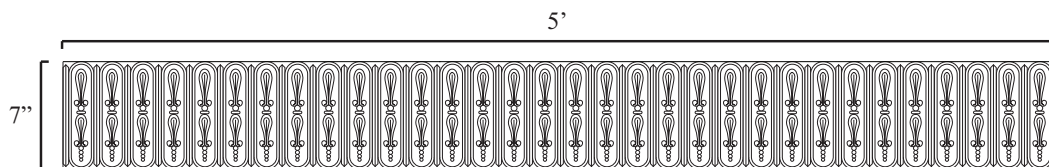


PANL-215D  
30-3/4" Width x 7" Height x 1-1/4" Thickness

## OPTIONAL FRIEZE PANELS



FRZ-200D  
7" Width x 3/4" Thickness x 5' Length



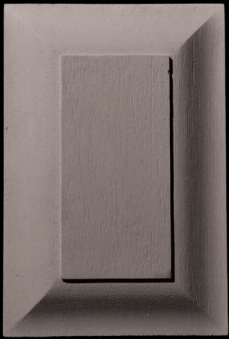
FRZ-201D  
7" Width x 3/4" Thickness x 5' Length

# PANELS

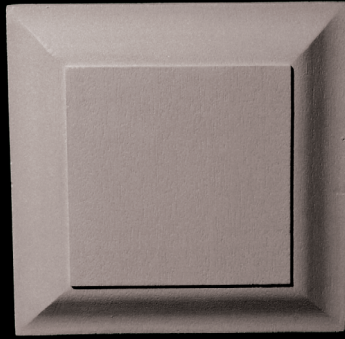


Customize your own valance using our resin products.  
The above custom valance uses our PANL-211.

# PANELS



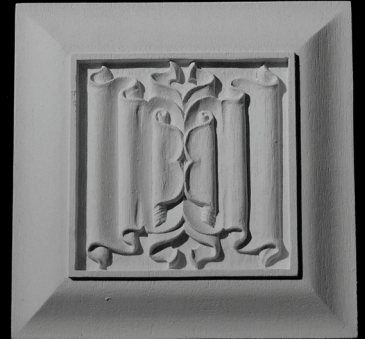
**PANL-220A**  
4" x 6" x 3/4"



**PANL-220B**  
6" x 6" x 3/4"



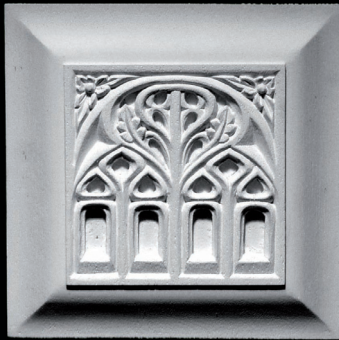
**PANL-221A**  
4" x 6" x 3/4"



**PANL-221B**  
6" x 6" x 3/4"



**PANL-222A**  
4" x 6" x 3/4"



**PANL-222B**  
6" x 6" x 3/4"



**PANL-300**  
57-1/2" x 23-1/2" x 1-1/2"

PANELS

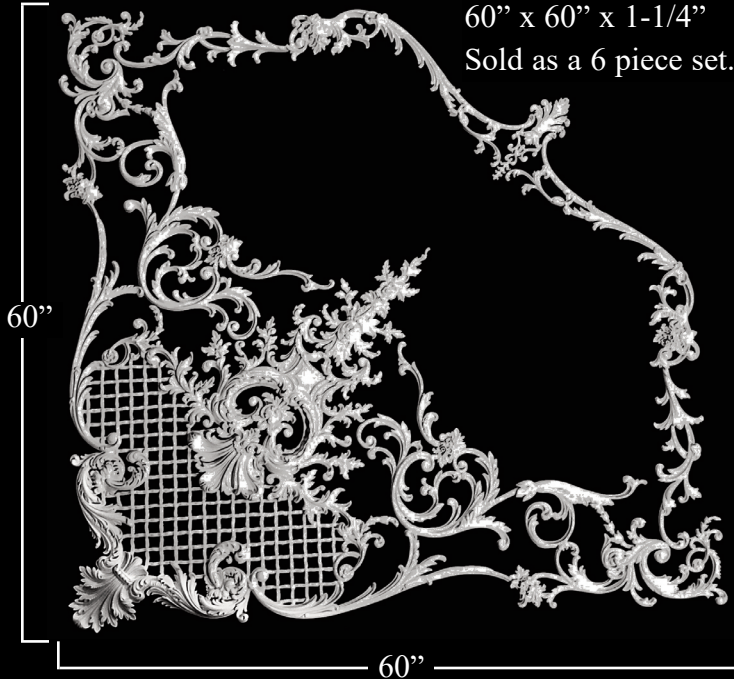
\* All sizes are approx.- W" x H" x Thickness"

# MONACO CORNER CEILING PANEL

**PANL-301**

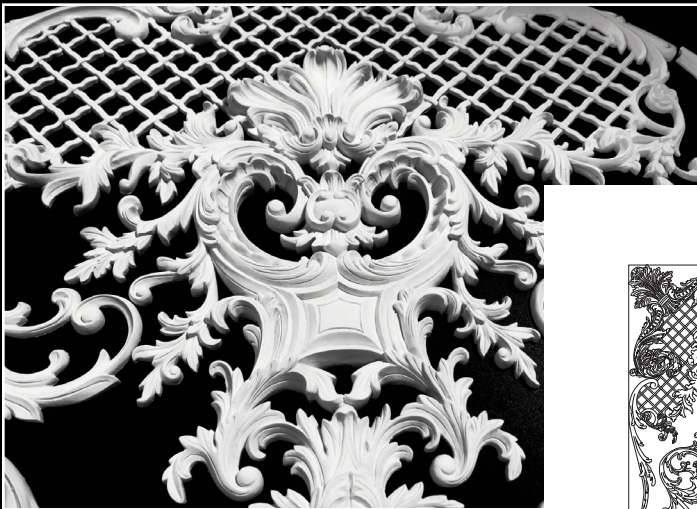
60" x 60" x 1-1/4"

Sold as a 6 piece set.



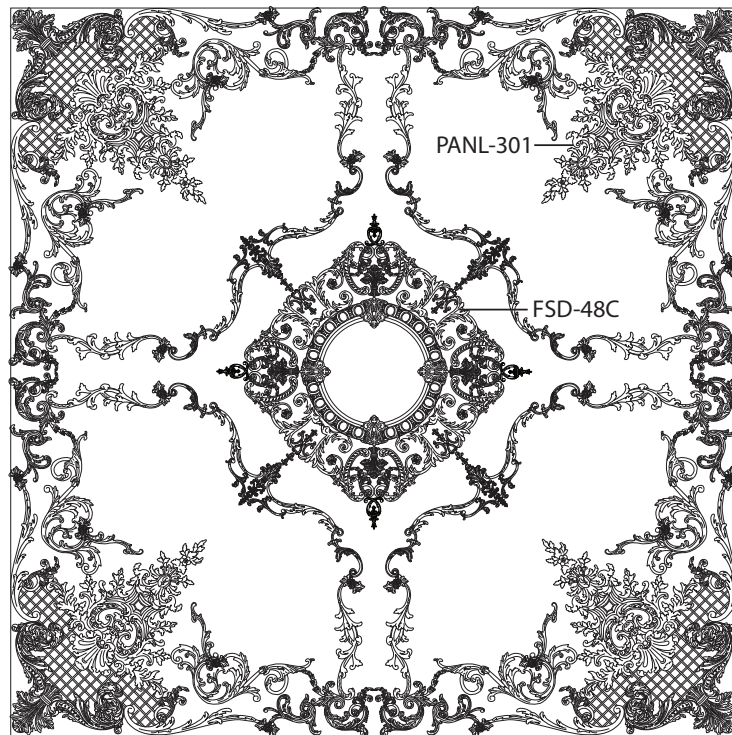
## Monaco Ceiling Advantages:

- Panels in stock ready to ship!
- Modular Design allows for infinite Custom Design capabilities.
- Lightweight and flexible for easy installation.
- Most ceiling designs can be installed in one day. A huge savings vs. plaster installations that take weeks to complete.
- Our designs are flexible at no additional cost which allows for easy installation on all radius and flat ceiling surfaces.....barrel ceilings our specialty!
- All Pearlworks parts are stainable and paintable.
- All masters are hand carved for unmatched detail. We never use a CNC machine!
- Installation can be done by carpenters using standard wood working tools. This eliminates the high cost of specialty installation crews.



Close up of detail.

## MONACO CEILING CONCEPT

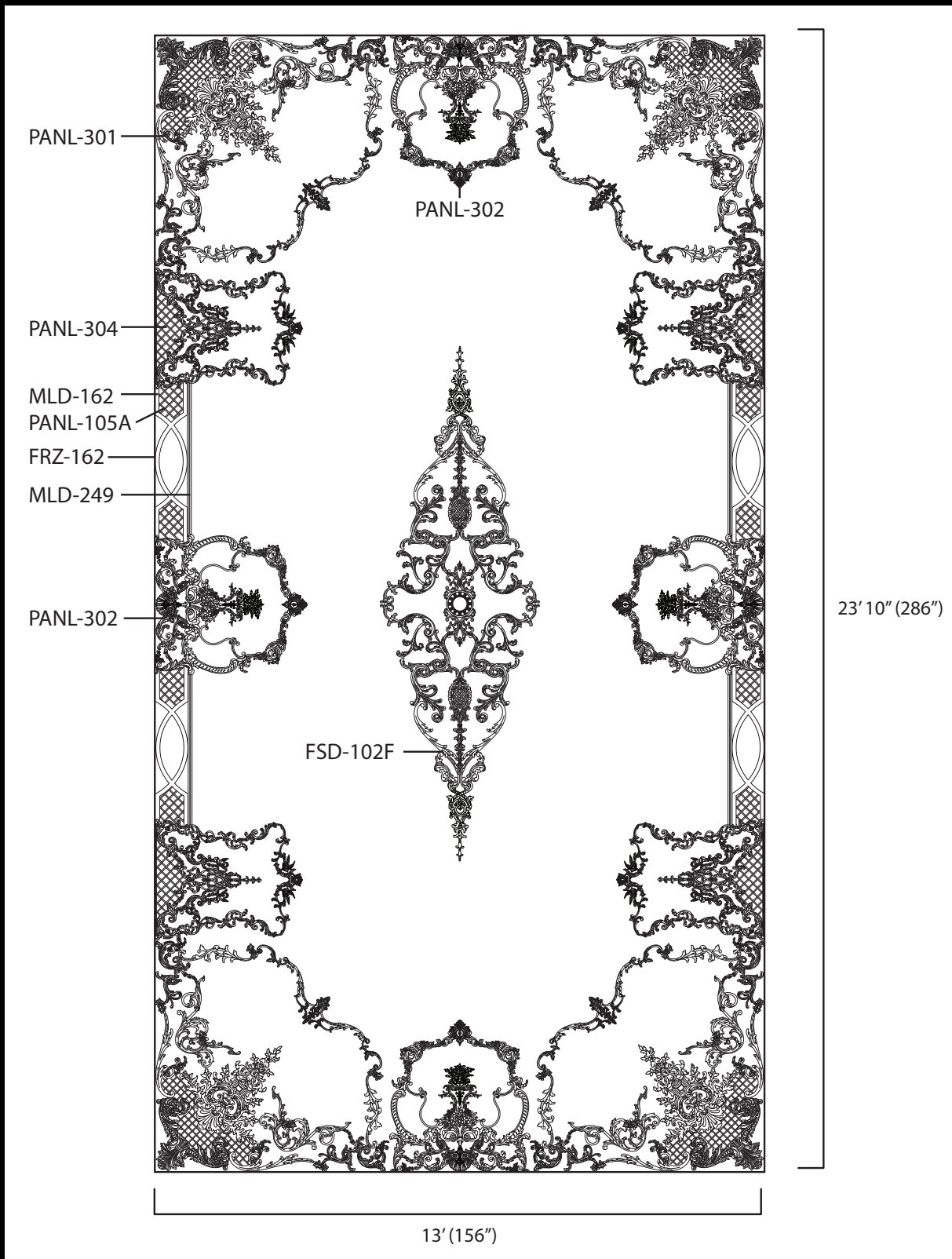


120" (10')

120"  
(10')

# MONACO CORNER CEILING PANEL

## MONACO CEILING CONCEPT



PANELS

\* All sizes are approx.- W" x H" x Thickness"

# MONACO CEILING PANEL

PANL-302

36" x 39" x 1-1/2"

Sold as a 5 piece set.



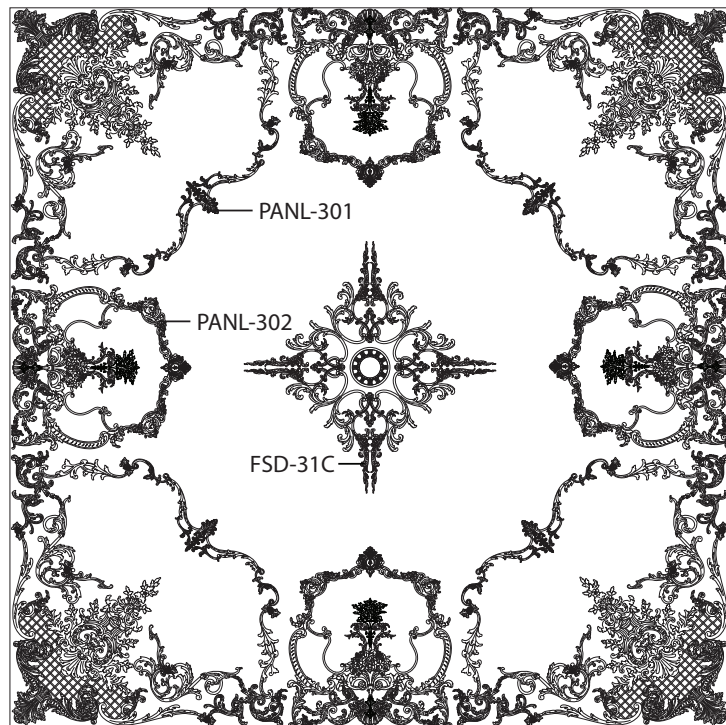
## Monaco Ceiling Advantages:

- Panels in stock ready to ship!
- Modular Design allows for infinite Custom Design capabilities.
- Lightweight and flexible for easy installation.
- Most ceiling designs can be installed in one day. A huge savings vs. plaster installations that take weeks to complete.
- Our designs are flexible at no additional cost which allows for easy installation on all radius and flat ceiling surfaces.....barrel ceilings our specialty!
- All Pearlworks parts are stainable and paintable.
- All masters are hand carved for unmatched detail. We never use a CNC machine!
- Installation can be done by carpenters using standard wood working tools. This eliminates the high cost of specialty installation crews.



Close up of detail.

## MONACO CEILING CONCEPT

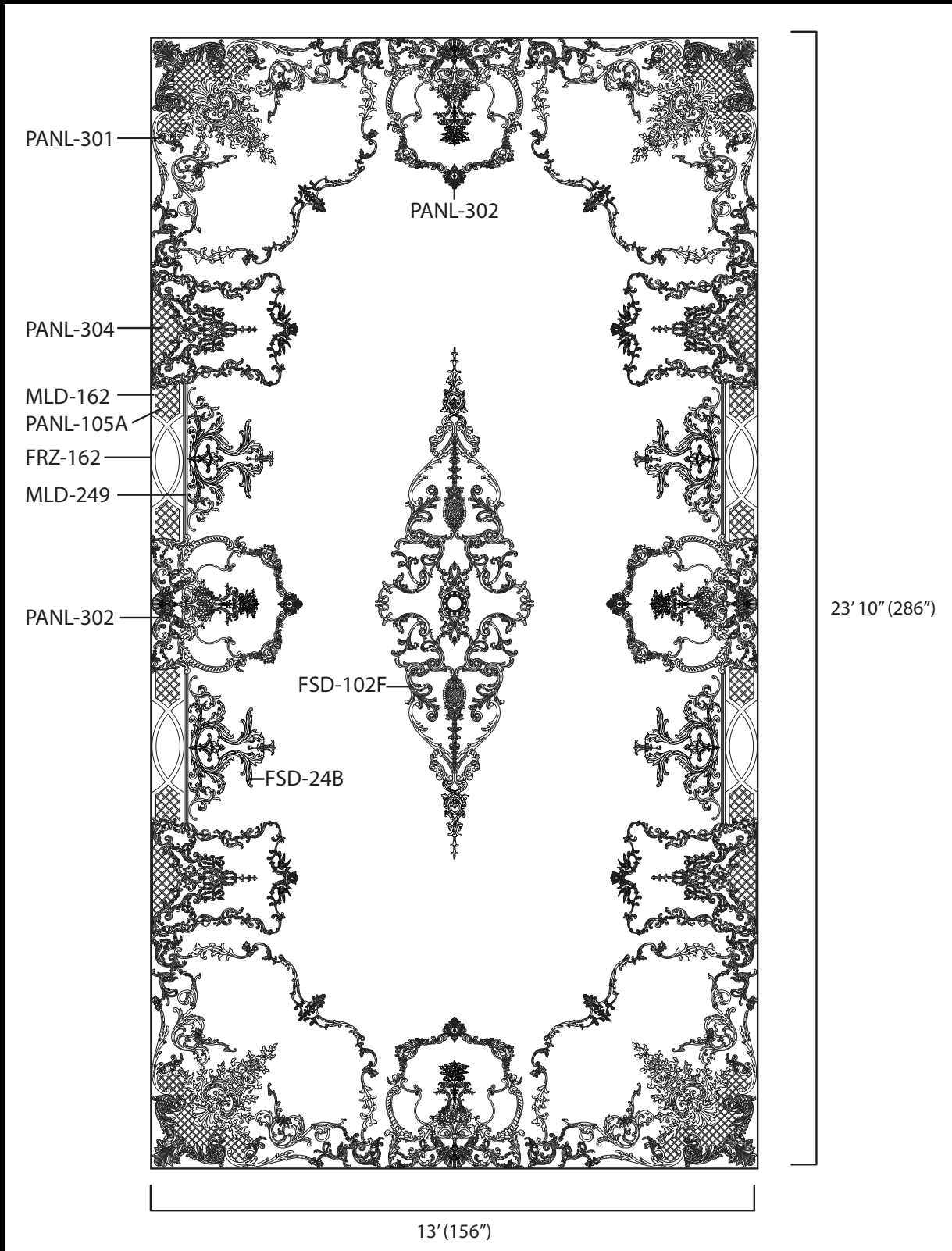


156"  
(13')

156" (13')

# MONACO CORNER CEILING PANEL

## MONACO CEILING CONCEPT



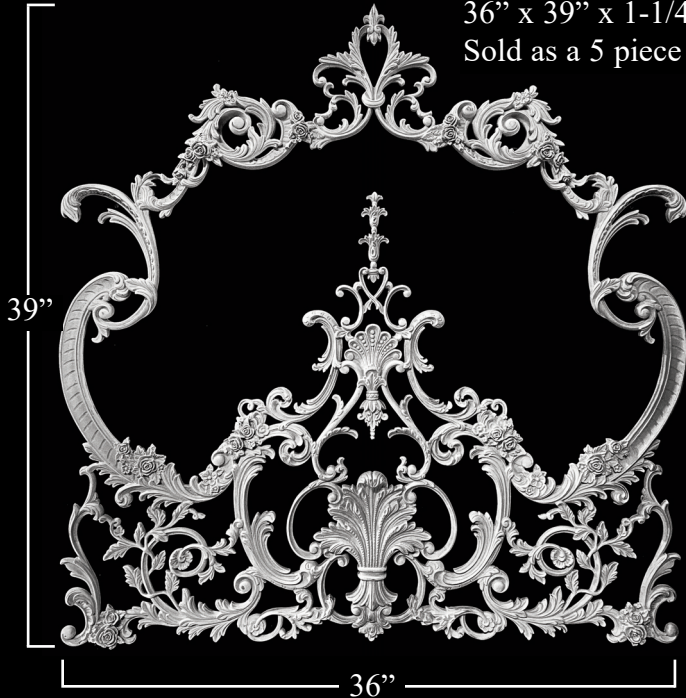
PANELS

# MONACO CEILING PANEL

## PANL-303

36" x 39" x 1-1/4"

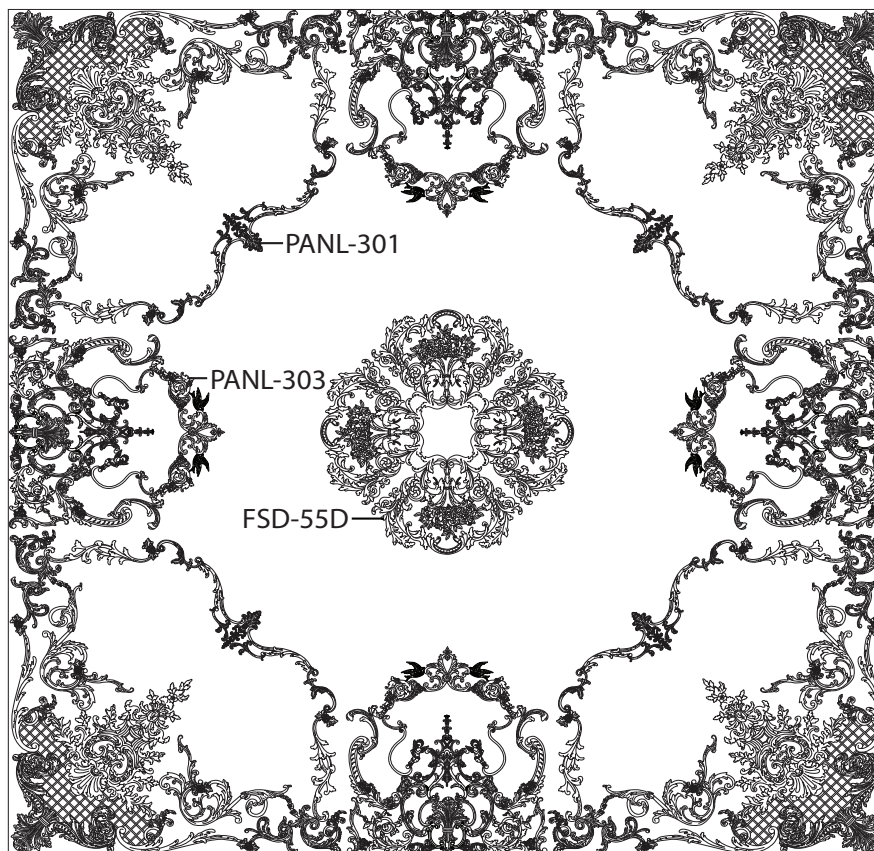
Sold as a 5 piece set.



## Monaco Ceiling Advantages:

- Panels in stock ready to ship!
- Modular Design allows for infinite Custom Design capabilities.
- Lightweight and flexible for easy installation.
- Most ceiling designs can be installed in one day. A huge savings vs. plaster installations that take weeks to complete.
- Our designs are flexible at no additional cost which allows for easy installation on all radius and flat ceiling surfaces.....barrel ceilings our specialty!
- All Pearlworks parts are stainable and paintable.
- All masters are hand carved for unmatched detail. We never use a CNC machine!
- Installation can be done by carpenters using standard wood working tools. This eliminates the high cost of specialty installation crews.

## MONACO CEILING CONCEPT

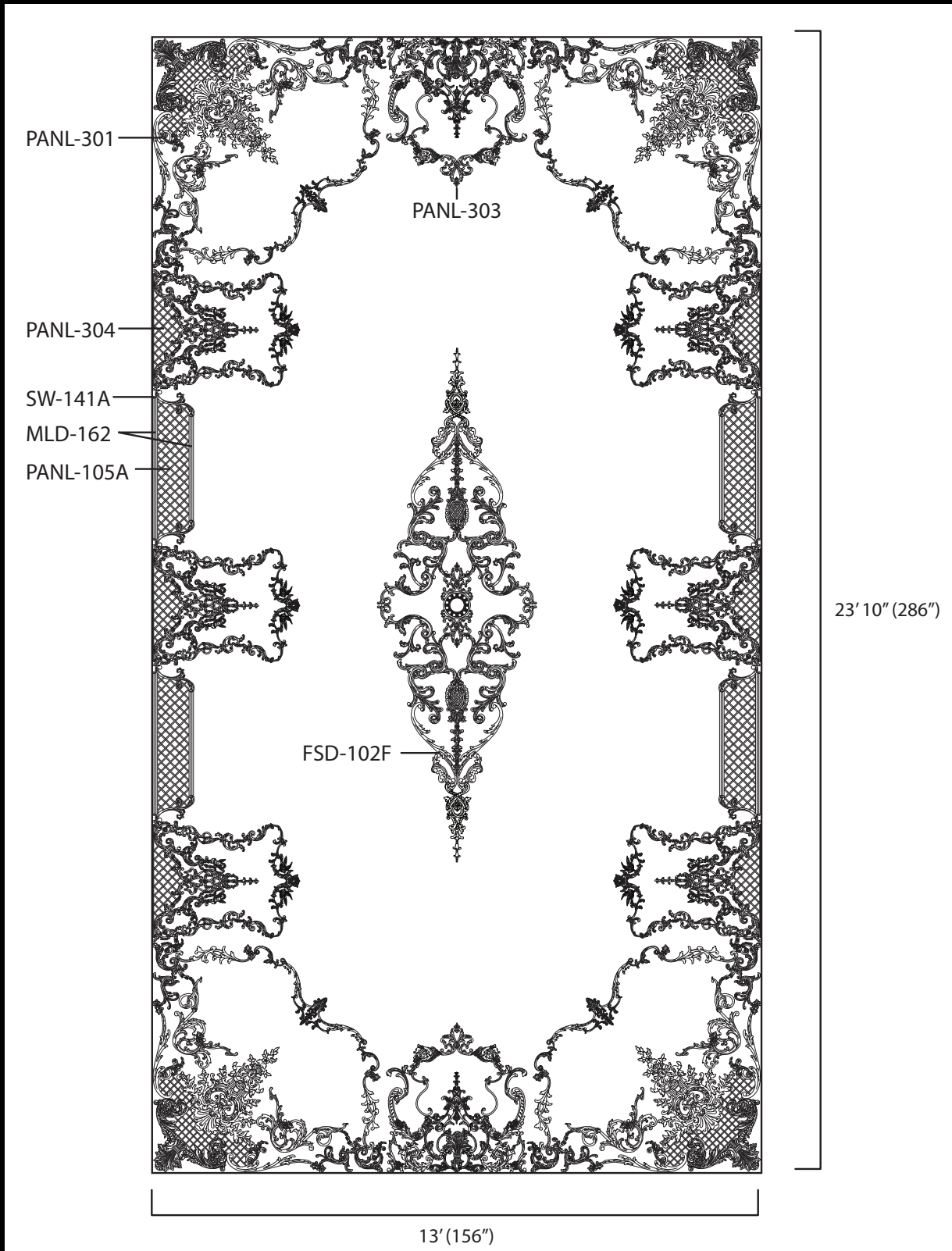


156"  
(13')

156" (13')

# MONACO CORNER CEILING PANEL

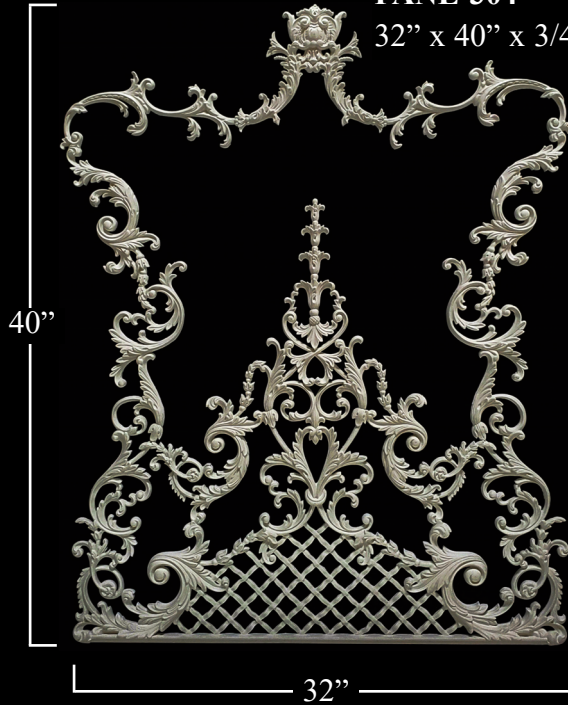
## MONACO CEILING CONCEPT



PANELS

# MONACO CEILING PANEL

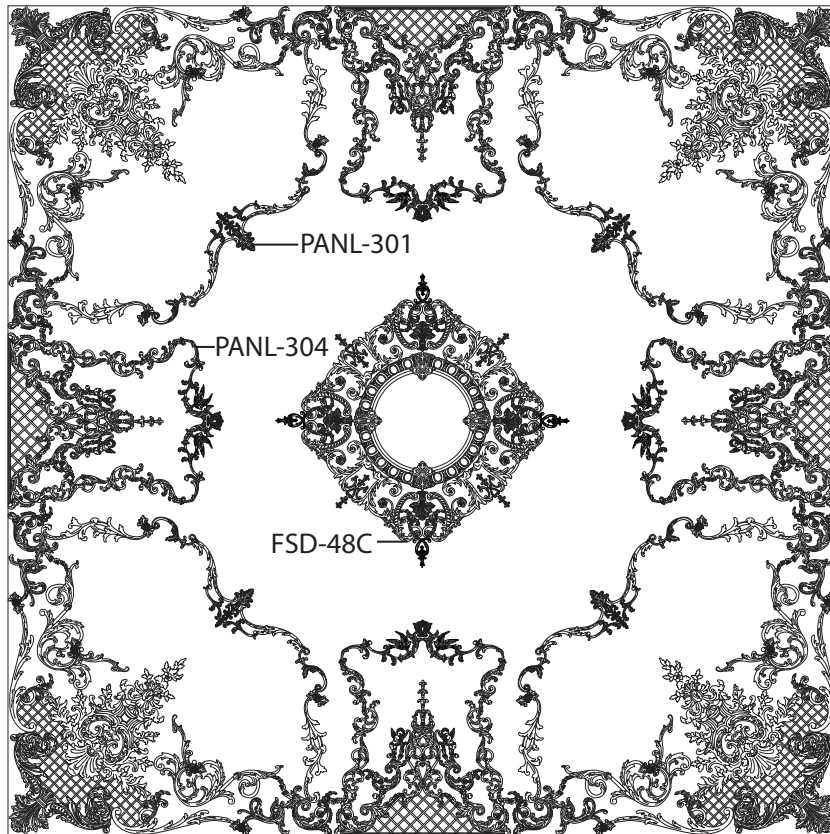
**PANL-304**  
32" x 40" x 3/4"



## Monaco Ceiling Advantages:

- Panels in stock ready to ship!
- Modular Design allows for infinite Custom Design capabilities.
- Lightweight and flexible for easy installation.
- Most ceiling designs can be installed in one day. A huge savings vs. plaster installations that take weeks to complete.
- Our designs are flexible at no additional cost which allows for easy installation on all radius and flat ceiling surfaces.....barrel ceilings our specialty!
- All Pearlworks parts are stainable and paintable.
- All masters are hand carved for unmatched detail. We never use a CNC machine!
- Installation can be done by carpenters using standard wood working tools. This eliminates the high cost of specialty installation crews.

## MONACO CEILING CONCEPT

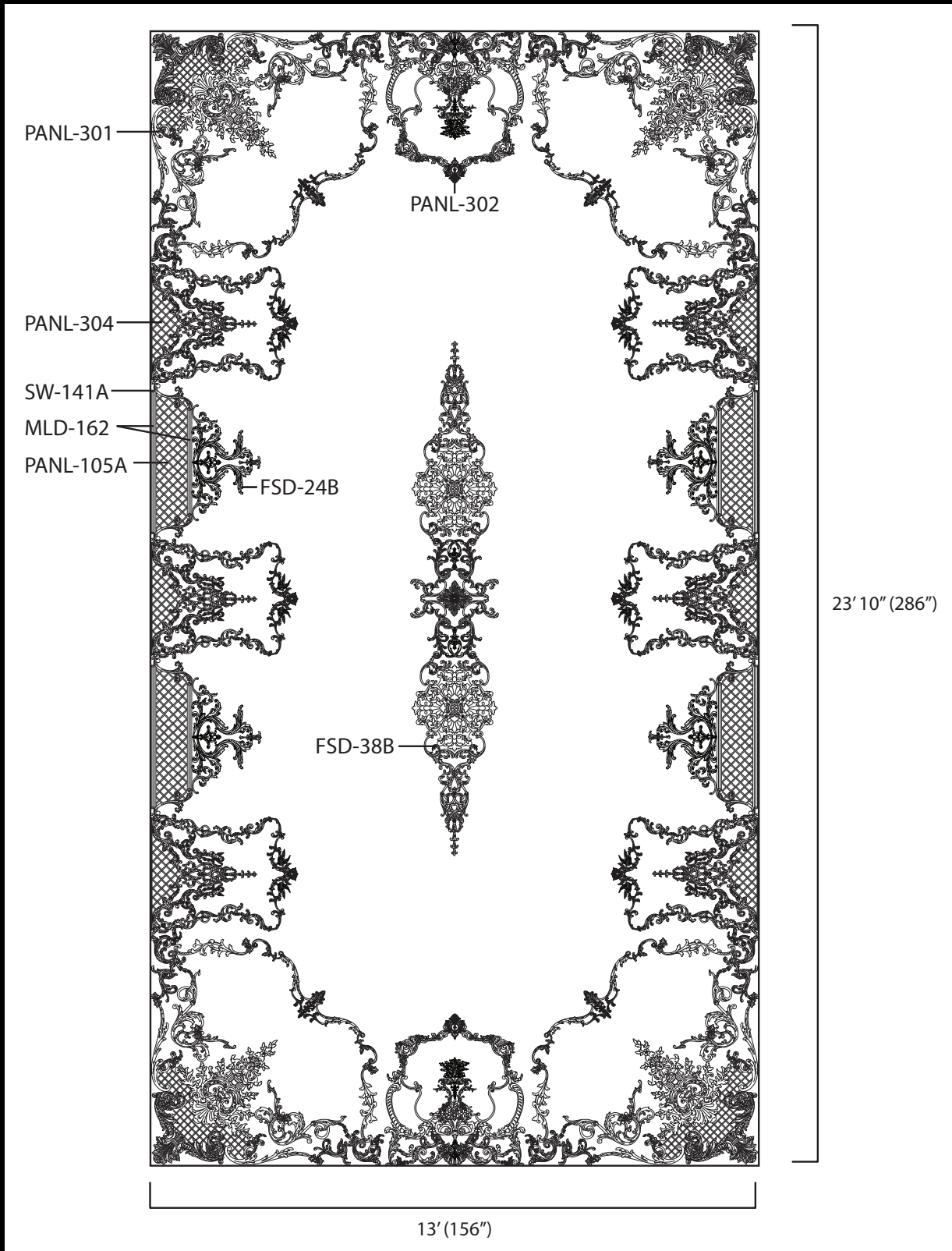


152"  
(12' 8")

152" (12' 8")

# MONACO CORNER CEILING PANEL

## MONACO CEILING CONCEPT

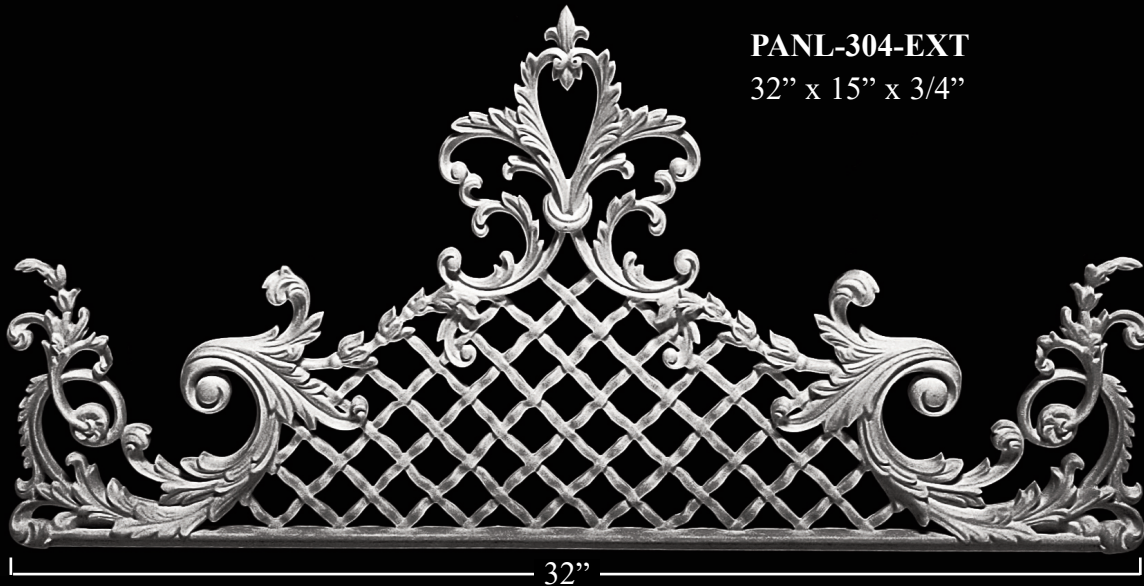


PANELS

# MONACO CEILING PANEL

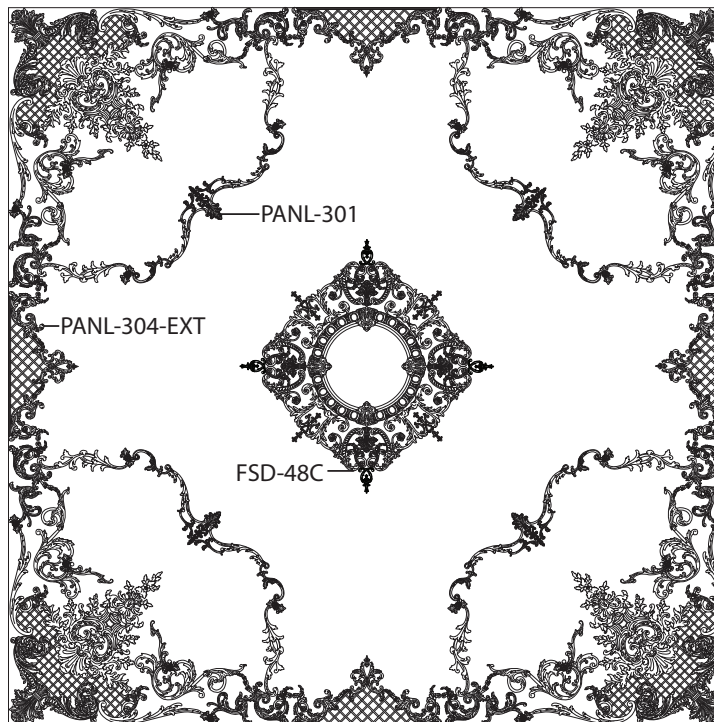
## Monaco Ceiling Advantages:

- Modular Design allows for infinite Custom Design capabilities.
- Lightweight and flexible for easy installation.
- Most ceiling designs can be installed in one day. A huge savings vs. plaster installations that take weeks to complete.
- Our designs are flexible at no additional cost which allows for easy installation on all radius and flat ceiling surfaces.....barrel ceilings our specialty!
- All Pearlworks parts are stainable and paintable.
- All masters are hand carved for unmatched detail. We never use a CNC machine!
- Installation can be done by carpenters using standard wood working tools. This eliminates the high cost of specialty installation crews.
- Panels in stock ready to ship!



**PANL-304-EXT**  
32" x 15" x 3/4"

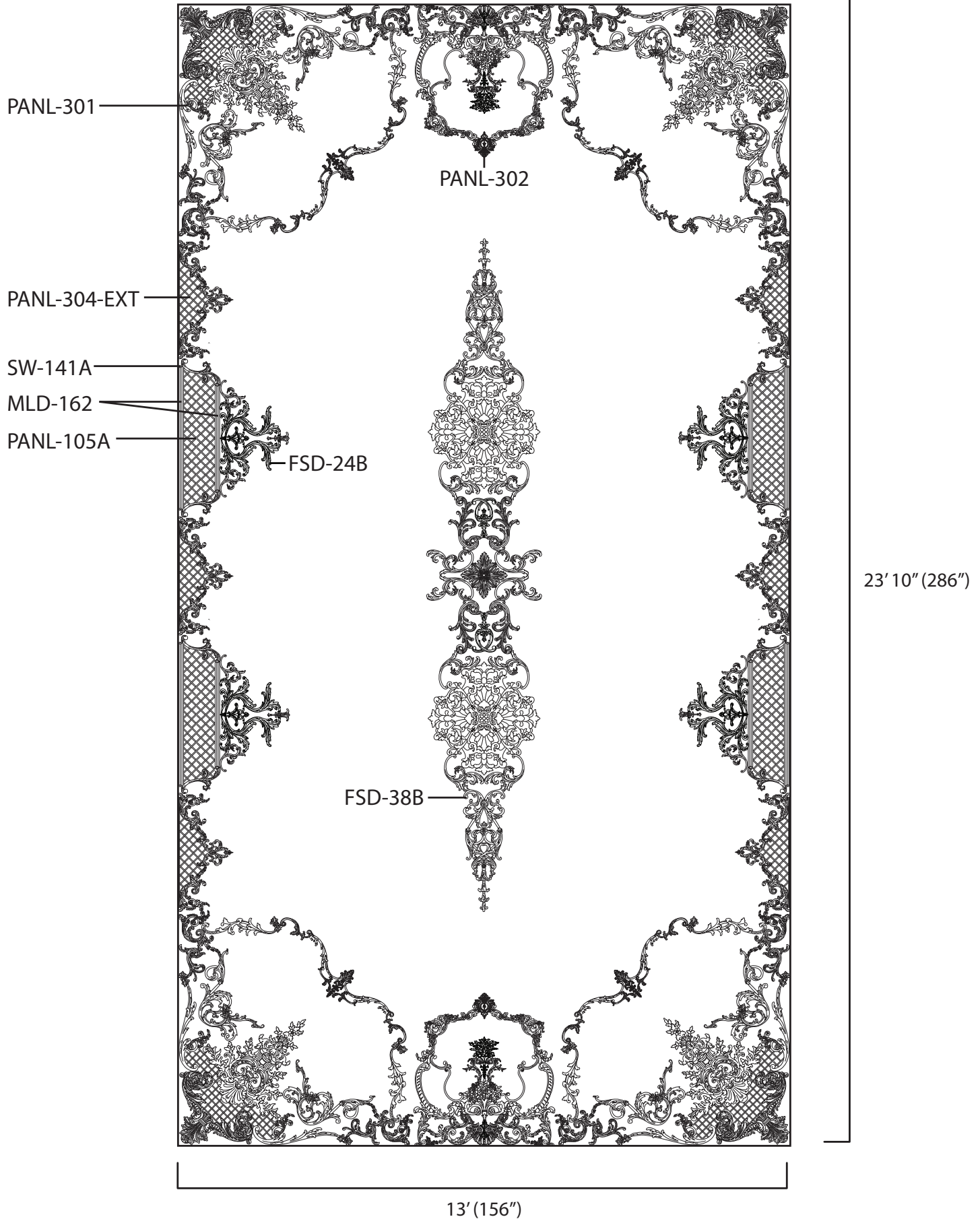
### MONACO CEILING CONCEPT



152" (12' 8")

# MONACO CORNER CEILING PANEL

## MONACO CEILING CONCEPT



PANELS

\* All sizes are approx.- W" x H" x Thickness"

# PANELS



# WALL PANEL DESIGNS

## Optional Connection Mouldings

OL-122A (5 piece set)  
OL-122B (5 piece set)



MLD-103A 5/8" x 3/8" x 10'  
MLD-103B 3/4" x 1/2" x 10'



MLD-111A 5/8" x 1/2" x 10'  
MLD-111B 3/4" x 1/2" x 10'



MLD-113A 5/8" x 1/2" x 10'  
MLD-113B 3/4" x 1/2" x 10'



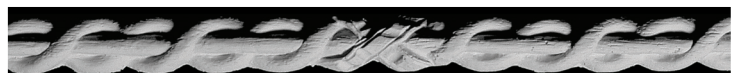
MLD-123A 5/8" x 3/8" x 10'  
MLD-123B 3/4" x 1/2" x 10'



MLD-125A 5/8" x 3/8" x 10'  
MLD-125B 3/4" x 1/2" x 10'



MLD-126B 5/8" x 1/2" x 10'  
MLD-126C 3/4" x 1/2" x 10'



MLD-127A 5/8" x 1/4" x 10'  
MLD-127B 3/4" x 3/8" x 10'



MLD-213A 5/8" x 1/4" x 10'  
MLD-213B 3/4" x 3/8" x 10'

PANELS

\*OL-122A shown in photo.

\* All sizes are approx.- W" x H" x Thickness"

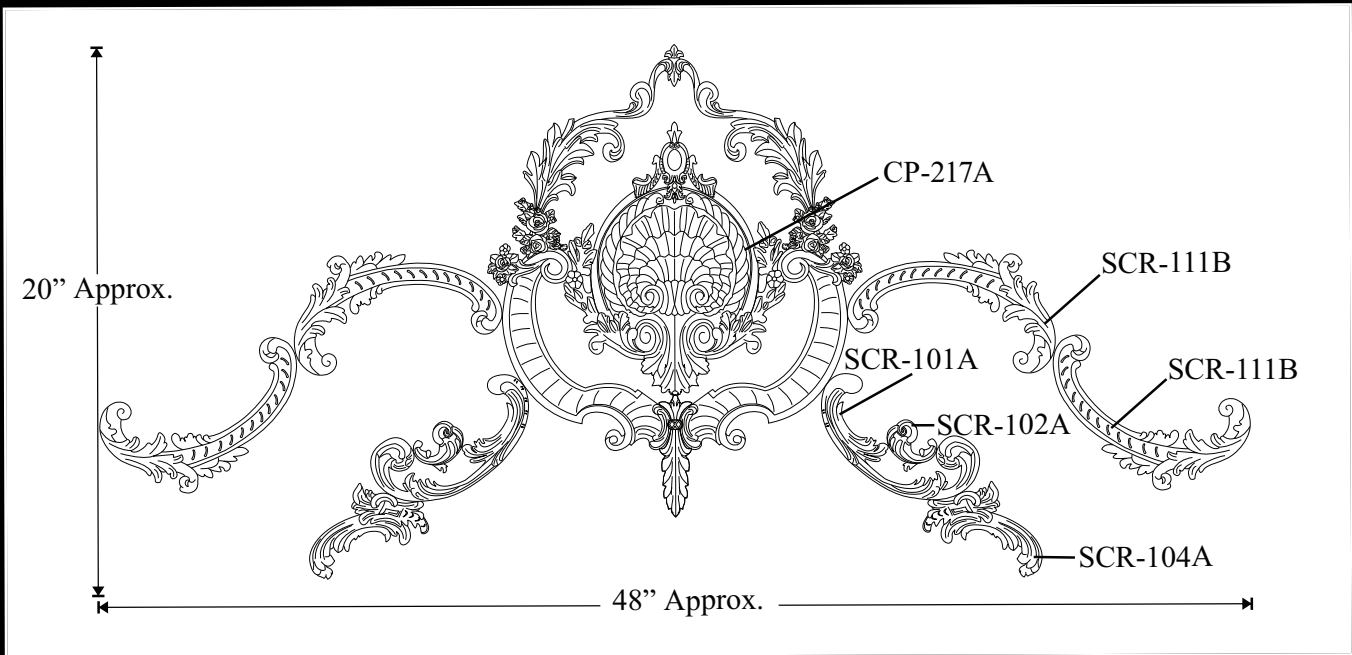
# WALL PANEL DESIGNS



# FreeStyle Part Designs



FSD-19A



QTY	PART LIST
1	CP-217A
2 pair	SCR-111B
1 pair	SCR-101A
1 pair	SCR-102A
1 pair	SCR-104A



CP-217A  
17" x 21" x 1-1/2"

PANELS

# PANEL PRICE LIST

#	Part Number	Price
1	PANL-1-100I	\$139.95
2	PANL-1-100J	\$149.95
3	PANL-1-100K	\$159.95
4	PANL-1-100L	\$169.95
5	PANL-1-100M	\$179.95
6	PANL-1-102I	\$131.95
7	PANL-1-102J	\$143.95
8	PANL-1-102K	\$153.95
9	PANL-1-102L	\$159.95
10	PANL-1-102M	\$175.95
11	PANL-1-117I	\$126.95
12	PANL-1-117J	\$138.95
13	PANL-1-117K	\$148.95
14	PANL-1-117L	\$153.95
15	PANL-1-117M	\$170.95
16	PANL-1-150I	\$126.95
17	PANL-1-150J	\$138.95
18	PANL-1-150K	\$148.95
19	PANL-1-150L	\$153.95
20	PANL-1-150M	\$170.95
21	PANL-1-I	\$49.95
22	PANL-1-J	\$59.95
23	PANL-1-K	\$69.95
24	PANL-1-L	\$69.95
25	PANL-1-M	\$79.95
26	PANL-100I	\$82.95
27	PANL-100J	\$87.95
28	PANL-100K	\$93.95
29	PANL-100L	\$98.95
30	PANL-100M	\$104.95
31	PANL-102I	\$87.95
32	PANL-102J	\$93.95
33	PANL-102K	\$98.95
34	PANL-102L	\$104.95
35	PANL-102M	\$109.95
36	PANL-103A	\$98.95

#	Part Number	Price
37	PANL-103B	\$120.95
38	PANL-104A	\$24.95
39	PANL-104B	\$24.95
40	PANL-104A-EXT	\$79.95
41	PANL-105A	\$24.95
42	PANL-105B	\$24.95
43	PANL-105A-EXT	\$49.95
44	PANL-105B-EXT	\$49.95
45	PANL-106A	\$23.95
46	PANL-106B	\$23.95
47	PANL-114A	\$24.95
48	PANL-114B	\$29.95
49	PANL-114C	\$29.95
50	PANL-114B-EXT	\$59.95
51	PANL-116B-0	\$39.95
52	PANL-116B-1	\$39.95
53	PANL-116B-2	\$44.95
54	PANL-116B-3	\$44.95
55	PANL-117I	\$79.95
56	PANL-117J	\$89.95
57	PANL-117K	\$99.95
58	PANL-117L	\$99.95
59	PANL-117M	\$109.95
60	PANL-119	\$24.95
61	PANL-120	\$24.95
62	PANL-121C	\$329.95
63	PANL-121D	\$349.95
64	PANL-129	\$49.95
65	PANL-130A	\$21.95
66	PANL-131	\$49.95
67	PANL-132	\$49.95
68	PANL-133	\$49.95
69	PANL-134	\$49.95
70	PANL-140	\$8.95
71	PANL-150I	\$82.95
72	PANL-150J	\$87.95

#	Part Number	Price
73	PANL-150K	\$93.95
74	PANL-150L	\$98.95
75	PANL-150M	\$104.95
76	PANL-160A	\$34.95
77	PANL-160B	\$44.95
78	PANL-2-100I	\$126.95
79	PANL-2-100J	\$138.95
80	PANL-2-100K	\$148.95
81	PANL-2-100L	\$153.95
82	PANL-2-100M	\$170.95
83	PANL-2-102I	\$131.95
84	PANL-2-102J	\$143.95
85	PANL-2-102K	\$153.95
86	PANL-2-102L	\$159.95
87	PANL-2-102M	\$175.95
88	PANL-2-117I	\$126.95
89	PANL-2-117J	\$138.95
90	PANL-2-117K	\$148.95
91	PANL-2-117L	\$153.95
92	PANL-2-117M	\$170.95
93	PANL-2-150I	\$126.95
94	PANL-2-150J	\$138.95
95	PANL-2-150K	\$148.95
96	PANL-2-150L	\$153.95
97	PANL-2-150M	\$170.95
98	PANL-2-I	\$49.95
98	PANL-2-J	\$59.95
99	PANL-2-K	\$69.95
100	PANL-2-L	\$69.95
101	PANL-2-M	\$79.95
102	PANL-200	\$99.95
103	PANL-201	\$279.95
104	PANL-202L	\$99.95
105	PANL-202R	\$99.95
106	PANL-203	\$99.95
107	PANL-204	\$99.95

# PANEL PRICE LIST

#	Part Number	Price
108	PANL-205	\$274.95
109	PANL-206	\$229.95
110	PANL-207A	\$229.95
111	PANL-207B	\$279.95
112	PANL-209	\$65.95
113	PANL-210A	\$79.95
114	PANL-210B	\$99.95
115	PANL-211A	\$87.95
116	PANL-211B	\$99.95
117	PANL-212A	\$89.95
118	PANL-212B	\$119.95
119	PANL-212C	\$139.95
120	PANL-212D	\$159.95
121	PANL-213A	\$98.95
122	PANL-213B	\$120.95
123	PANL-213C	\$142.95
124	PANL-213D	\$164.95
125	PANL-214C	\$169.95
126	PANL-214D	\$179.95
127	PANL-215C	\$175.95
128	PANL-215D	\$186.95
129	PANL-220A	\$9.95
130	PANL-220B	\$14.95
131	PANL-221A	\$16.95
132	PANL-221B	\$19.95
133	PANL-222A	\$19.95
134	PANL-222B	\$21.95
135	PANL-300	\$349.95
136	PANL-301	\$999.95
137	PANL-302	\$824.95
138	PANL-303	\$824.95
139	PANL-304	\$399.95
140	PANL-304-EXT	\$279.95

# PANELS

